

4. *T. laevigatum* (WILLD.) DC. corresponds more or less to the section *Erythrosperma* but it contains according to HANDEL-MAZZETTI's circumscription also species belonging to sect. *Erythrocarpa*.
5. *T. obliquum* FRIES corresponds to sect. *Obliqua* DAHLST., occurring only in Northwestern Europe. All records from Asia as well as from Central Europe do not refer to this section but the species belong partly to sect. *Erythrosperma*, partly to other sections.

### 31. *Wendelboa* v. S.

auctore J. L. VAN SOEST, Den Haag.

*Wendelboa* v. S., Nytt Mag. Bot. 13: 71 (1966).

Herbae perennes pusillae araneosae. Folia in rosulam congesta. Axis simplex scapiformis monocephala. Capitulum multiflorum. Involucri phylla biserialia ± corniculata; receptaculum ciliatum. Flores lingulati apice dentati, marginales extus stria colorata praediti. Stylus bifidus. Achaenium subcylindricum, superne ± tuberculatum, in rostrum decoloratum crassum breve inconspicue abiens; pappi setae albae, numerosae, fragiles, denique caducae, uniserialia.

The main difference between *Wendelboa* and *Taraxacum* are the fragile and disappearing pappus and the ciliate receptaculum.

1. *W. obtusa* v. S., Nytt Mag. Bot. 13: 73 (1966).

Icon.: l.c.: fig. 2 – Tab. nostr.: 187, fig. 1.

Typus: WENDELBO 86, O!

Planta 3–4 cm alta, basi residuis foliorum subnigris ± incrassata, inferne dense araneosa. Folia canescenti-viridia, exteriora spathulata, interiora sublobata, lobi obtuse triangulares; lobus terminalis usque ad 10 mm longus, apice rotundatus. Scapi dense araneosi. Involucrum angustum, pallide viride; phylla exteriora laxa appressa, ovata, subaraneosa, late albo-marginata, erosa. Receptaculum modice ciliatum. Capitulum usque ad 8 mm diametro. Ligulae pallide luteae, marginales extus stria purpurea ornatae; stigmata flava. Achaenium stramineum, in rostrum sensim contractum; rostrum 0,6–1,8 mm longum.

Pakistan: Chitral: Tirich Mir, Barum Gol, Zapotili, 3700 m, WDB. 86!

Distr. gen.: Endem.

### 32. *Chondrilla*

auctore H. W. LACK, Berlin-Dahlem

*Chondrilla* L., Spec. Plant. 2: 786 (1753).

Lit.: M. M. ILJIN, Kritičeskij Obzor Roda *Chondrilla* L., Bjuulletin Otdelenija Kaučukonosov (Moskva) 3 (1930).

Herbae biennes vel perennes virgato-ramosissimae usque ad 1 m altae. Folia variabilia sed saepius angusta latitudine plurius longiora. Indumentum variabile. Capitula pauciflora. Involucrum anguste cylindricum; phylla exteriora imbricata, minuta, lingulata; interiora anguste linearia vel lineari-lanceolata, uniseriata,

Folia valde reducta, superiora  $40 \times 1$  mm, filiformia. Involucri phylla exteriora nuda; interiora apice plerumque pilis pluribus longis obsita, costa in statu fructifero bene prominente. Achaenii corpus 3–5 mm longum, in parte superiore tuberculatum; coronula bene evoluta, e squamulis brevibus acutis plerumque patulis composita; rostrum 2–3 mm longum.

**A f g h a n i s t a n :** **E:** Kabul: In declivibus jugi Salang, NEUB. 4307!, 4408!, FREITAG 3620!, FOHLEN S-27-C!, S-42-B! Qalatak, 1950 m, PODLECH 19712!, 19847! Panjshir: Basarak, 2050 m, GILLI 4276! Nuristan: In valle Bashgal prope Bragamata, 2100–2600 m, PODLECH 16188!, ANDERS 5079! Inter Bragamata et Ahmed-i Dewana Baba, 2500 m, RASOUL 25 in BRECKLE A-3425! Darrah-i Pengar, 3050 m, PODLECH 16553! In valle Rangul, 4400 m, THESIGER 1424! In valle Suyengal, 3800 m, RASOUL 235 in BRECKLE A-3635-a! — **NE:** Taliqan: Tang-e Warsaj, 1700 m, ANDERS 10929!

**P a k i s t a n :** Chitral: Tirich Mir, Bomosto, 2900 m, KERST. 1575! In valle Brumboret, 1700 m, KERST. 2077!

Distr. gen.: Endem.

7. ***Ch. Evae*** LACK, sp. nov.

Icon.: Tab. 163.

Typus: ANDERS 10810, W!

Folia valde reducta, superiora subfiliformia,  $40 \times 2$  mm. Involucri phylla exteriora et interiora nuda, interiora interdum costa mediana prominente. Achaenii corpus 4,5–5,5 mm longum, in parte superiore tuberculatum; coronula e squamulis quinque longis acuminatis composita; rostrum c. 3 mm longum.

**A f g h a n i s t a n :** **E:** Kabul: In declivibus australibus jugi Salang prope Wolang, 2600 m, PODLECH 12237! Infra Sameda, 2150 m, PODLECH 15924! Laghman: NW Kail (Kayli), 2100–2500 m, 23. VII. 1973, ANDERS 10810!

Distr. gen.: Endem.

### 33. *Willemetia*<sup>1</sup>

*Willemetia* NECK., Elem. 1: 50 (1790).

Herba perennis foliis rosulatis, caule scaposo. Capitulum multiflorum. Involucrum biseriale. Receptaculum nudum. Achaenia conformia cylindraceo-prismatica, tuberculato-rugosa, longe rostrata, ad rostri basin squamis quinque erecto-conniventibus coronata; pappus pilosus.

1. ***W. tuberosa*** FISCH. & C. A. MEY. ex DC., Prodr. 7: 150 (1838)<sup>2</sup>.

Icon.: Fl. URSS.: tab. 29, fig. 2 (1964). — Tab. nostr.: 164.

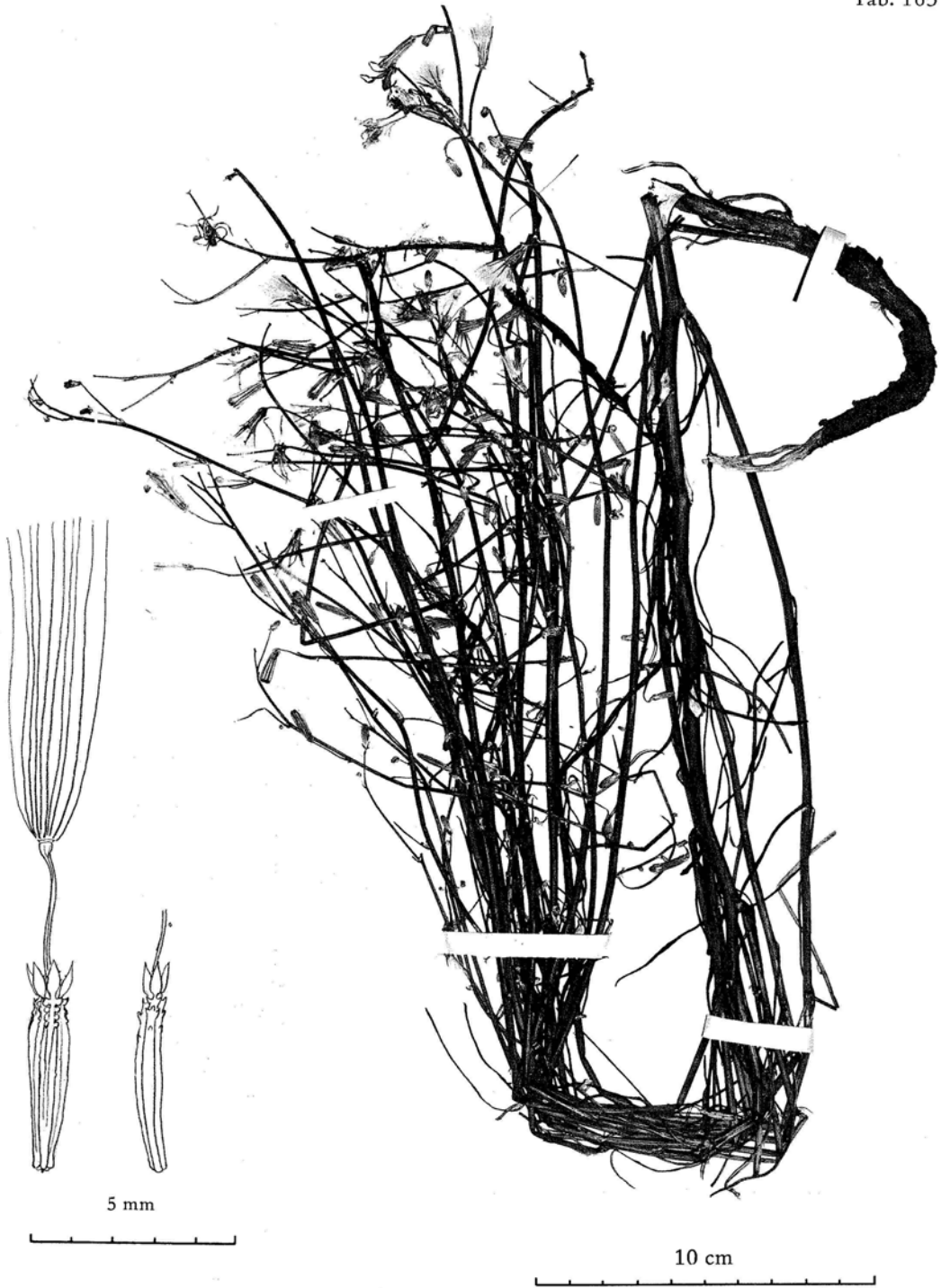
Typus: Talysh: Lenkoran, HOHEN', G-DC!

Radix repens hinc inde tubera parva proferens. Folia 4–12, 4 cm longa, omnia petiolata, in rosulam basalem congesta, laete viridia, subtus pallidiora, in sicco tenera, lyrato-runcinato; segmentum terminale 1,5–4 cm latum, obtusum vel late

1 Anmerkung während der Drucklegung: Der gültige Gattungsname ist: *Calycocorsus* F. W. SCHMIDT, Samml. Phys.-ökonom. Aufs. 1: 271 (1795).

Syn.: *Willemetia* NECK. ex CASS., Dict. Science Nat. 48: 427 (1827) non MAERKLIN (1801) nec *Willemeta* COTHENIUS.

2 *Calycocorsus tuberosus* (FISCH. & C. A. MEY.) RAUSCHERT, Feddes Repert. 73: 225 (1966). Bezgl. näherer nomenklatorischer Begründungen vergl. man RAUSCHERT, l.c.



*Chondrilla Evae* LACK - ANDERS 10810