

A *D. atropurpurea* (Franch.) Steb. foliis panduriformibus bene differt.

Herba perennis, robusta, rhizomate brevi, erecto vel ascendenti. Caulis 20—30cm altus, basi 5mm crassus, eramosus, interdum pauci-ramosus e medio, omnino sulcatus, praesertim superne nigro-hispidus. Folia basalia et inferiora ambitu obovata vel oblanceolata, 7—16cm longa, 3.5—4.5cm lata, panduriformia vel panduriforme-pinnatilobata vel-pinnatifida, lobis terminalibus flabelliformibus, ovatis vel cordato-ovatis, lobis lateralibus 1—jugis, deorsum attenuatis et ad petiolos longe deccurrentibus, omnibus margine apiculiformibus vel minute dentatis; folia media superioraque indivisa, minora, elliptica, longe elliptica, lanceolata vel oblanceolata, utrinque acuminata vel acuta, sessilia, vel petiolis 2.5cm longis; omnia textura tenuia, utrinque nigro-hispida. Calathidia cernua vel inclinata, 2—3 in numero ad apicem caulis inflorescentiam cymiformam dense formantia, pedunculis brevissimis. Involucrum late campanulatum, 2—2.5cm diam.; phylla c. 3—seriata, externa mediaque lanceolata, c. 1.7cm longa, 2mm lata, apice acuta, dorso ad costam nigro-hispida, interna longe elliptica, 1.6cm longa, c. 3mm lata, apice acuminata, dorso glabra, atrovirentia. Floculi purpurei. Achaenia fusiformia, compressa, fuscescentia, c. 6mm longa, costulis numerosis (ut videntur 11 in numero), inaequicrassis. Pappus pallide fuscus, setae c. 1cm longae, 2—seriatae, serrulatae, in anulū non concretae.

**Yunnan** (云南): Lijiang (丽江), 1940. 08. 28, R. C. Ching (秦仁昌) 31013 (Typus, PE); ibidem, alt. 4100 m, K. M. Feng (冯国楣) 21276.

多年生粗壮草本, 根状茎短, 直立或斜升。茎高 20—30cm, 基部直径 5mm, 不分枝或少分枝, 茎枝有条棱, 上部有黑色长硬毛。基生叶及下部茎叶同形, 倒卵形或倒披针形, 长 7—16cm, 宽 3.5—4.5cm, 琴状或琴状浅裂或半裂, 顶裂片扇形、卵形或卵状心形, 侧裂片 1 对, 沿叶柄下延, 裂片边缘有小尖头或小锯齿; 中上部茎叶不分裂, 小、椭圆形、长椭圆形或披针形或倒披针形, 上下两侧渐尖或急尖, 无柄或有长 2.5cm 的叶柄; 叶质薄, 两面被黑色长硬毛。头状花序下垂或歪斜, 2—3 个在茎顶排成紧密聚伞花序, 花序梗极短。总苞宽钟状, 直径 2—2.5cm; 总苞片约 3 层, 中外层披针形, 长约 1.7cm, 宽 2mm, 顶端急尖, 背部沿中脉有黑色长硬毛, 内层长椭圆形, 长 1.6cm, 宽约 3mm, 顶端渐尖, 背面无毛, 苞片黑色。小花紫色。瘦果纺锤形, 压扁, 带褐色, 长约 6mm, 纵肋约 11 条, 不等形。冠毛淡褐色, 冠毛刚毛长约 1cm, 2 层, 锯齿状, 基部不连合成环。

#### 10. 聚伞厚喙菊 新种 图 1:4

*Dubyaea cymiformis* Shih, sp. nov.

Planta *D. oligophyllae* (Sch. Bip.) Steb. proxima, sed involucri phyllis margine et subtus ad costam nigro-hispidis flosculis roseis bene differt.

Herba perennis, 45cm alta. Caulis robustus, basi 8mm crassus, inferne porphyreus, e basi ramosus, ramis ascendentibus, nigro-hispidus. Folia basalia

inferioraque ambitu oblanceolata vel elliptica, 18cm longa, c. 4cm lata, longe vel breve petiolata, lyrato-pinnatipartita, lobis terminalibus late ellipticis, lateralibus 4—5-jugis, ellipticis vel oblique ovatis, omnibus margine subintegris vel parce minute dentatis, apice obtusis vel acutis, apiculiformibus; media superioraque basalibus et inferioribus similia, sessilia, basi auriculato-dilatato-amplexicaulia; folia suprema linearia vel anguste lanceolata, indivisa, integra vel basi paucissime-dentata; omnia textura tenuia, utrinque aspera, nigro-hispida. Calathidia erecta, 15 in numero ad apicem ramorum et caulis inflorescentiam cymiformem formantia. Invulcrum late campanulatum c. 2cm diam.; phylla 3-seriata, externa longe triangulato-lanceolata, 7mm longa, c. 1mm lata, dorso ad costam et margine nigro-hispida, media interna longe elliptico-lanceolata, c. 1cm longa, c. 1.5mm lata, dorso ad costam nigro-hispida. Flosculi rosei (e nota collectorum). Pappus albus; setae serrulatae.

**Xizang** (西藏): Yadong (亚东), alt. 3200m, 1960.07.24, K. X. Fu (傅国勋)00984 (Typus, PE).

多年生草本，高45cm，茎粗壮，分枝斜升，茎枝被黑色长硬毛。基生叶及下部茎叶倒披针形或椭圆形，长18cm，宽约4cm，大头羽状深裂，有长或短叶柄，顶裂片宽椭圆形，侧裂片4—5对，椭圆形或偏斜卵形，全部裂片近全缘或有稀疏的小锯齿，顶端钝或急尖，有小尖头；中上部茎叶与基生叶及下部茎叶同形并等样分裂，无柄，基部耳状半抱茎；最上部茎叶线形或长披针形，不分裂，全缘或具极少锯齿。叶质薄，两面粗糙，被黑色长硬毛。头状花序直立，15个在茎枝顶端排成聚伞状花序。总苞宽钟状，直径约2cm；总苞片3层，外层长三角状披针形，长7mm，宽约1mm，背面沿中脉有黑色长硬毛，中内层长椭圆状披针形，长约1cm，宽约1.5mm，背面沿中脉有黑色长硬毛。小花红色(自采集记录)。冠毛白色，冠毛刚毛锯齿状。

### 11. 察隅厚喙菊

**Dubyaea tsarongensis** (W. W. Smith.) Steb. in Journ. Bot. Brit. For 75:17, 1937 et in Mem. Torrey Bot. Club 19(3):24, 1940; S. Y. Hu in Quart. Journ. Taiwan Mus. 19(3—4): 237, 1966. — *Lactuca tsarongensis* W. W. Smith. in Notes Bot. Gard. Edinb. 12:211, 1920. — *L. tsarongensis* f. *chimiliensis* W. W. Smith, l.c., 1920, syn. nov. — *Crepis tsarongensis* var. *chimiliensis* (W. W. Smith.) Anthony in Notes Bot. Gard. Edinb. 18:194, 1934, syn. nov. — *Dubyaea tsarongensis* ssp. *chimiliensis* (W. W. Smith.) Steb. in Journ. Bot. Brit. For 75:18, 1937, syn. nov. — *D. chimiliensis* (W. W. Smith.) Steb. in Mem. Torrey Bot. Club 19(3):22, 1940, syn. nov.; S. Y. Hu, l.c., 1966.

云南: 俞德浚 22419、20269、19832; 王啟无 67226; 冯国楣 7855。西藏: 青藏队 82—10220。模式标本采自西藏察隅。

### 12. 矮小厚喙菊

**Dubyaea gombalana** (Hand.-Mazz.) Steb. in Journ. Bot. Brit. For. 75:17,

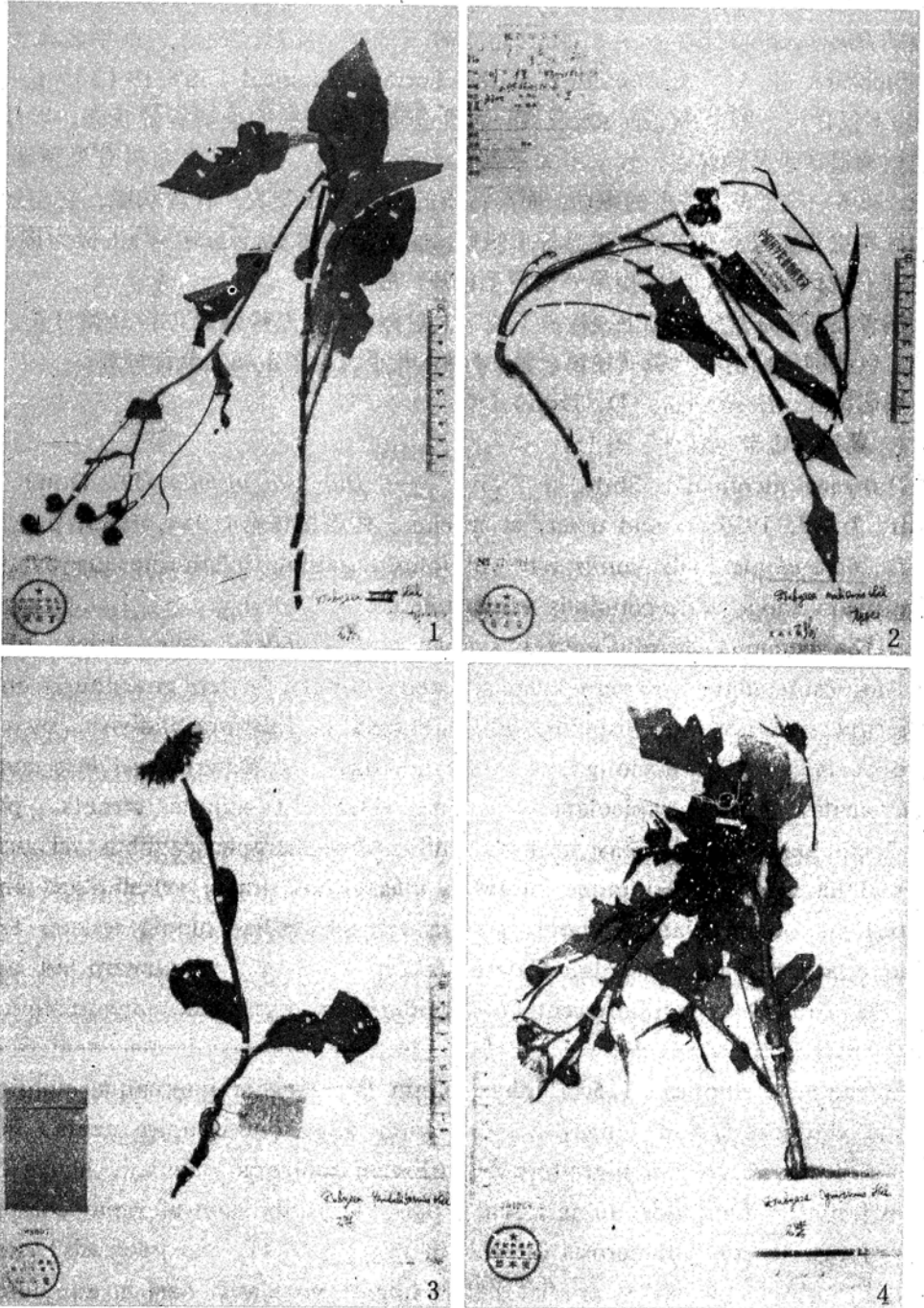


图1 1. 翼柄厚喙菊; 2. 木里厚喙菊; 3. 琴叶厚喙菊; 4. 聚伞厚喙菊。

Fig.1 *Dubyaea pteroponda*; 2. *D. mulliensis*; 3. *D. panduriformis*; 4. *D. cymiformis*.

队)742559; Gongbogyamda (工布江达), alt. 3600m, ibidem. 7810; Gyaca (加查), alt. 3500m, 1972.09.01, Xizang Exped.(西藏队) 4378 (Typus, PE)。尼泊尔