

basi truncatis vel oblique truncatis bene differt.

Herba perennis, radice verticali, rhizomate brevi, ascendenti. Caulis simplex, erectus, basi ad 3mm diam., 35—55cm altus, superne ramosus, ramis longis (ad 4cm. longis), tenuiter sulcatus, praesertim superne nigro-hispidus. Folia basalia et inferiora ambitu oblanceolata, petiolis ad 10cm longis, alatis vel non alatis, lyrato-pinnatipartita, lobis terminalibus triangularibus vel oblique triangularibus, 6—7cm longis, 2.5—4cm latis, basi truncatis vel oblique truncatis, lobis lateralibus 1—3 jugis, semiellipticisvel triangularibus, omnibus apice apiculiformibus; folia media superioraque, minora, indivisa, lanceolata vel anguste lanceolata vel lineari-lanceolata, apice acuminata, sessilia, basi auriculato-sagittato-dilatata, semiamplexicaulia vel breve alato-petiolata; omnia textura tenuia, margine remote triangulariter dentata, dentibus mucronulatis, utrinque vel subtus nigro-hispida. Calathidia cernua, 3—4 in numero ad apicem rami et caulis inflorescentiam cymiformem dense vel laxe formantia. Invulucrum late campanulatum, 1.5—2cm diam.; phylla 3-seriata, externa longe triangularia, 5mm longa, 1mm lata, media internaque longe elliptica, 1.1—1.4cm longa, 1.3—2mm lata, omnia apice acuta, atrovirentia in sicco, internis exceptis dorso ad costam nigro-hispida. Flosculi roseoli, ligulatis, ligulis 8.5mm longis, 1.5mm latis, tubis 6.5mm longis. Achaenia immatura. Pappus flavidiusculus, setae 2-seriatae, serrulatae, c. 1cm longis, in anulum non concretae.

Sichuan (四川): Gonggaling (贡嘎岭), alt. 3700m, T. T. Yu (俞德浚) 13117; Xianglingshan (相岭山), alt. 2800m, T. P. Wang (王作宾), 9461; Muli (木里), alt. 3300m 1983. 08. 19, Qinghai-Xizang Exped. (青藏队) 83-13098 (Typus, PE).

多年生草本，根直伸，根状茎短，斜昇。茎单生，直立，高35—55cm，基部直径达3mm，上部分枝，分枝长达4cm，茎枝有细条纹，特别是上部被黑色长硬毛。基生叶及下部茎叶大头羽状深裂，倒披针形，叶柄长达10cm，有翼或无翼，顶裂片三角形或偏斜三角形，长6—7cm，宽2.5—4cm，基部截形或斜截形，侧裂片1—3对，半椭圆形或三角形，全部裂片顶端有小尖头；中上部茎叶小，不分裂，披针形、长披针形或线状披针形，顶端渐尖，无叶柄，基部耳状或箭头状扩大半抱茎或有短翼柄。叶质薄，边缘有稀疏的三角形锯齿，齿顶有尖头，两面或下面被黑色长硬毛。头状花序下垂，3—4个在茎枝顶端排成疏松或紧缩的聚伞花序。总苞宽钟状，直径1.5—2cm；总苞片3层，外层长三角形，长5mm，宽1mm，中内层长椭圆形，长1.1—1.4cm，宽1.3—2mm，总苞片顶端急尖，干后变黑色，除内层外，背面沿中脉被黑色长硬毛。小花红色，舌状，舌片长8.5mm，宽1.5mm，管长6.5mm。瘦果未熟。冠毛微黄，冠毛刚毛2层，长1cm，锯齿状，基部不连合成环。

9. 琴叶厚喙菊 新种 图1:3

Dubyaea panduriformis Shih, sp. nov.

A *D. atropurpurea* (Franch.) Steb. foliis panduriformibus bene differt.

Herba perennis, robusta, rhizomate brevi, erecto vel ascendenti. Caulis 20—30cm altus, basi 5mm crassus, eramosus, interdum pauci-ramosus e medio, omnino sulcatus, praesertim superne nigro-hispidus. Folia basalia et inferiora ambitu obovata vel oblanceolata, 7—16cm longa, 3.5—4.5cm lata, panduriformia vel panduriforme-pinnatilobata vel-pinnatifida, lobis terminalibus flabelliformibus, ovatis vel cordato-ovatis, lobis lateralibus 1—jugis, deorsum attenuatis et ad petiolos longe deccurrentibus, omnibus margine apiculiformibus vel minute dentatis; folia media superioraque indivisa, minora, elliptica, longe elliptica, lanceolata vel oblanceolata, utrinque acuminata vel acuta, sessilia, vel petiolis 2.5cm longis; omnia textura tenuia, utrinque nigro-hispida. Calathidia cernua vel inclinata, 2—3 in numero ad apicem caulis inflorescentiam cymiformam dense formantia, pedunculis brevissimis. Involucrum late campanulatum, 2—2.5cm diam.; phylla c. 3—seriata, externa mediaque lanceolata, c. 1.7cm longa, 2mm lata, apice acuta, dorso ad costam nigro-hispida, interna longe elliptica, 1.6cm longa, c. 3mm lata, apice acuminata, dorso glabra, atrovirentia. Floculi purpurei. Achaenia fusiformia, compressa, fuscescentia, c. 6mm longa, costulis numerosis (ut videntur 11 in numero), inaequicrassis. Pappus pallide fuscus, setae c. 1cm longae, 2—seriatae, serrulatae, in anulū non concretae.

Yunnan (云南): Lijiang (丽江), 1940. 08. 28, R. C. Ching (秦仁昌) 31013 (Typus, PE); ibidem, alt. 4100 m, K. M. Feng (冯国楣) 21276.

多年生粗壮草本, 根状茎短, 直立或斜升。茎高 20—30cm, 基部直径 5mm, 不分枝或少分枝, 茎枝有条棱, 上部有黑色长硬毛。基生叶及下部茎叶同形, 倒卵形或倒披针形, 长 7—16cm, 宽 3.5—4.5cm, 琴状或琴状浅裂或半裂, 顶裂片扇形、卵形或卵状心形, 侧裂片 1 对, 沿叶柄下延, 裂片边缘有小尖头或小锯齿; 中上部茎叶不分裂, 小、椭圆形、长椭圆形或披针形或倒披针形, 上下两侧渐尖或急尖, 无柄或有长 2.5cm 的叶柄; 叶质薄, 两面被黑色长硬毛。头状花序下垂或歪斜, 2—3 个在茎顶排成紧密聚伞花序, 花序梗极短。总苞宽钟状, 直径 2—2.5cm; 总苞片约 3 层, 中外层披针形, 长约 1.7cm, 宽 2mm, 顶端急尖, 背部沿中脉有黑色长硬毛, 内层长椭圆形, 长 1.6cm, 宽约 3mm, 顶端渐尖, 背面无毛, 苞片黑色。小花紫色。瘦果纺锤形, 压扁, 带褐色, 长约 6mm, 纵肋约 11 条, 不等形。冠毛淡褐色, 冠毛刚毛长约 1cm, 2 层, 锯齿状, 基部不连合成环。

10. 聚伞厚喙菊 新种 图 1:4

Dubyaea cymiformis Shih, sp. nov.

Planta *D. oligophyllae* (Sch. Bip.) Steb. proxima, sed involucri phyllis margine et subtus ad costam nigro-hispidis flosculis roseis bene differt.

Herba perennis, 45cm alta. Caulis robustus, basi 8mm crassus, inferne porphyreus, e basi ramosus, ramis ascendentibus, nigro-hispidus. Folia basalia

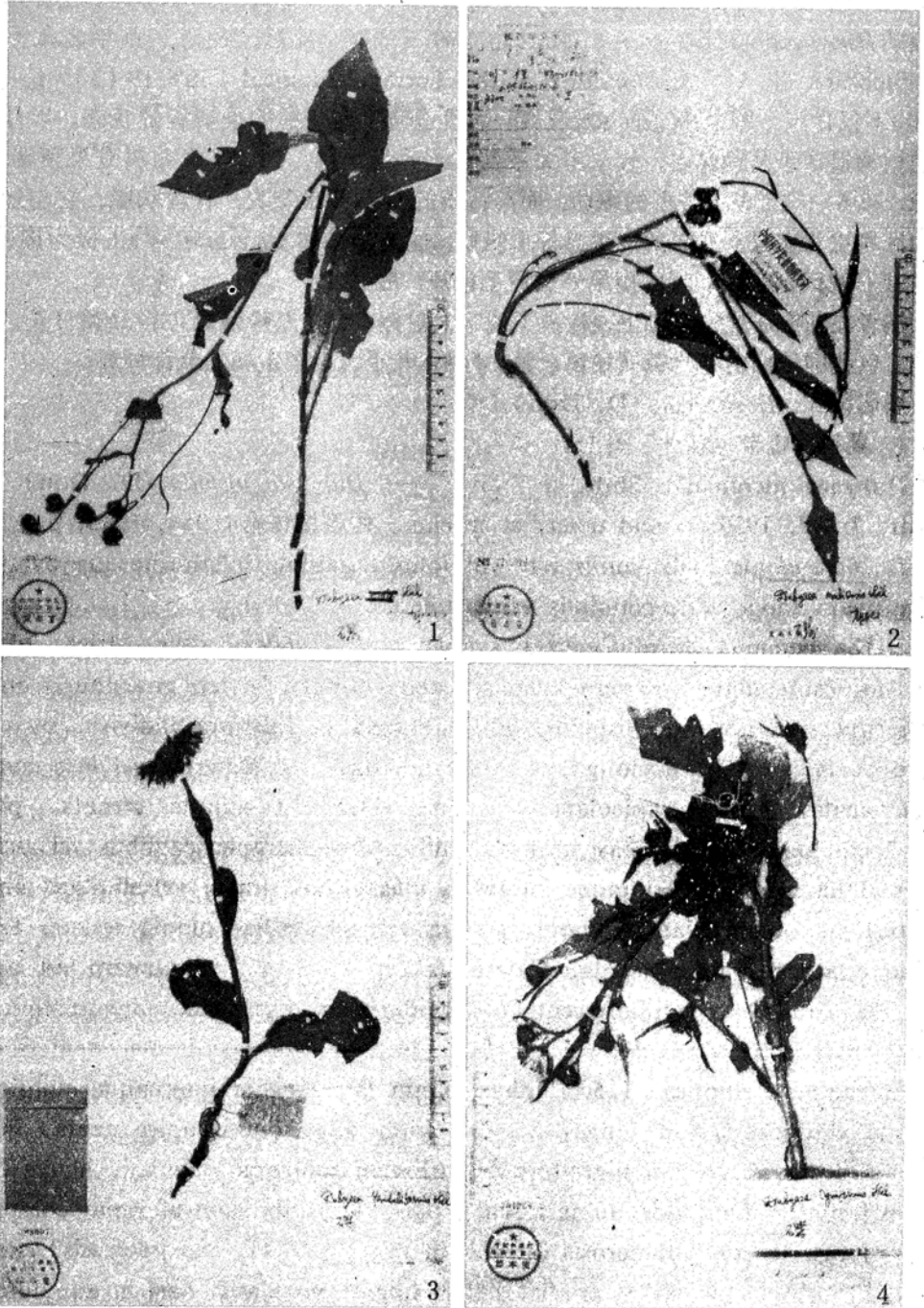


图1 1. 翼柄厚喙菊; 2. 木里厚喙菊; 3. 琴叶厚喙菊; 4. 聚伞厚喙菊。

Fig.1 *Dubyaea pteroponda*; 2. *D. mulliensis*; 3. *D. panduriformis*; 4. *D. cymiformis*.

队)742559; Gongbogyamda (工布江达), alt. 3600m, ibidem. 7810; Gyaca (加查), alt. 3500m, 1972.09.01, Xizang Exped.(西藏队) 4378 (Typus, PE)。尼泊尔