

Otanthus maritimus Hoffm. et Link (= *Diotis maritima* (L.) Sm.)

Tripleurospermum auriculatum (Boiss.) Rech. fil. (= *Chamaemelum auriculatum* Boiss.)

Matricaria recutita L. (= *M. chamomilla* L.)

Cotula cinerea Del. Add R. to its distribution.

Artemisia judaica L. Add R., GE. to its distribution.

Artemisia judaica L. var. **sinaitica** Täckh. var. nov. A typo differt capitula minoribus brunneo-lutea, pedunculi longioribus.

Holotype : Sinai, 6.3.1928, A. K a i s e r No. 6 (G).

Artemisia inculta Del. (= *A. herba-alba* Asso). Add R. to its distribution.

Artemisia inculta Del. var. **laxiflora** (Boiss.) Täckh. comb. nov. Basionym : *Artemisia herba-alba* var. *laxiflora* Boiss. Fl. Orient. 3 : 365, 1875.

***Artemisia scoparia** Waldst. et Kit. Distribution : Mma., Di. see M. I m a m. J. C h r t e k et J. K o s i n o v a, 1972.

Senecio flavus (Decne) Sch. Bip. Add R. to its distribution.

Senecio desfontainei Druce. Add R. to its distribution.

***Senecio hoggariensis** Benth. GE. See A. A m i n, 1972.

Calendula micrantha Tineo et Guss. var. **lanigera** Vierh. Add Nv., R. to its distribution.

***Hyoseris scabra** L. Distribution : Mma.

***Hedypnois cretica** (L.) Dum. - Cours. subsp. **cretica**, Distribution : Mma.

Hedypnois cretica (L.) Dum. - Cours. subsp. **rhagadioloides** (L.) Täckh. et Boulos stat. nov. Basionym : *Hedypnois rhagadioloides* F. W. Schmidt in Samml. Phys. Aufs. 1, 1795, p. 279. Distribution : M., DI.

***Hedypnois cretica** (L.) Dum. - Cours. subsp. **ramosa** Täckh. et Boulos subsp. nov. (plate 6)

Herba procumbens, copiose ramosa, rami multicipites, 30-40 cm longi.

Folia magis acute - dentata quam in typo.

Holotype : Dl. Along Cairo-Alexandria desert road, south of Amria, 2.4.1961, V. T ä c k h o l m, (CAI). Procumbent, richly branched, with 30-40 cm long, many-headed branches. Leaves more acutely dentate than in the type.

***Garhadiolus hedynois** (Fisch. et Mey.) Jaub. et Sp. collected in Mma : Mariut, 1964, A f i f i ; Burg ed Arab, V. T ä c k o l m, 1965 ; between Burg el Arab and El Alamein, O s h, 1961 and Amria, I m a m, 1971.

Leontodon

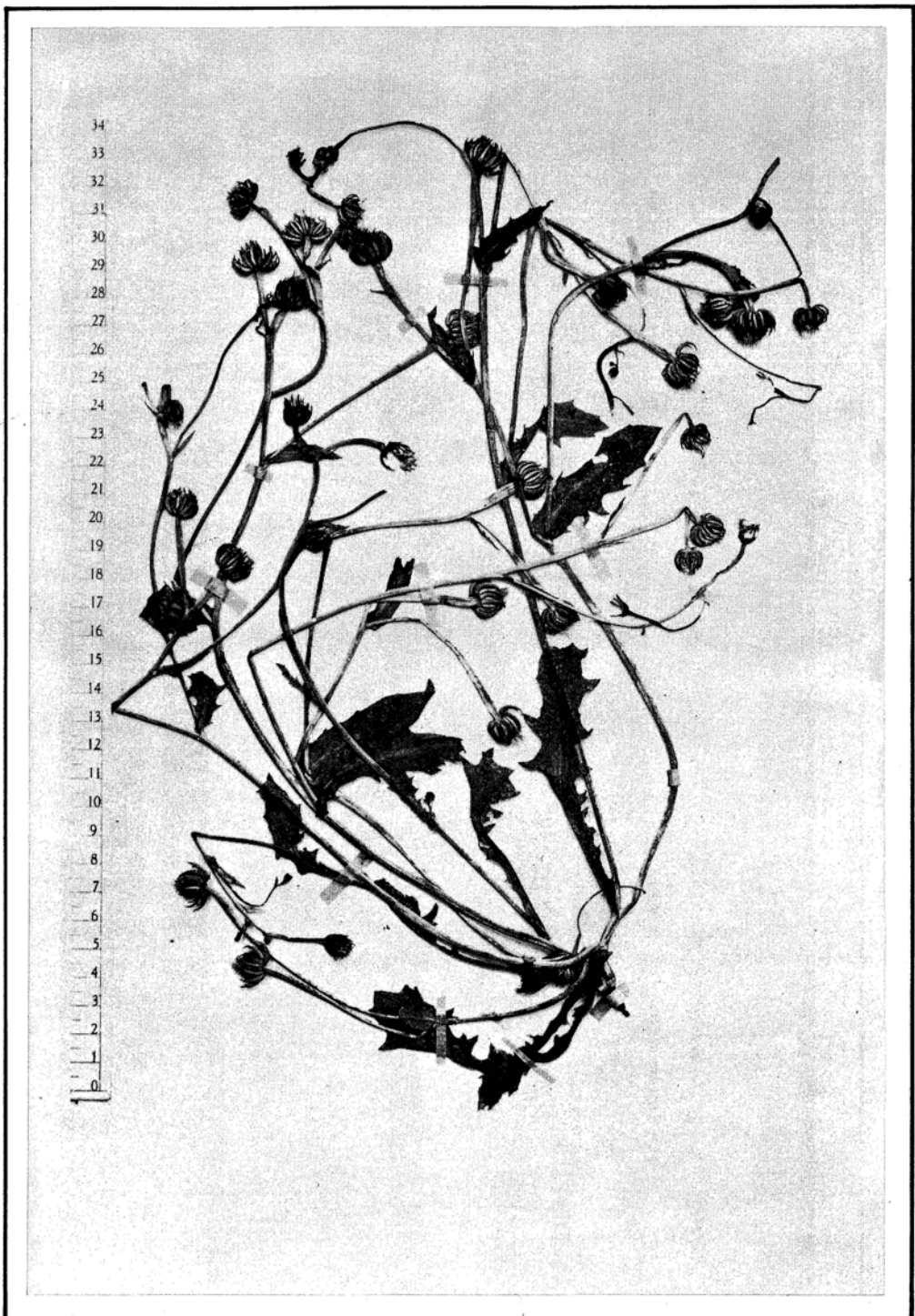
F. J. W i d d e r, "Diagnoses stirpium novarum, V-VIII" Phytton, 12 (1-4) : 200-215, 1967. His concept of the Egyptian taxa is followed here.

***Leontodon simplex** (Viv.) Widder (= Hieracium simplex Viv., non al., Apargia hastilis Willd. var. B. Viv., non al., Crepis simplex Froel. ex DC. p. p., Kalbfussia salzmanni Coss., non Schultz, K. muelleri Dur. et Barr. p. p., non Schultz, K. orientalis Bég. et Vacc., non Jaub. et Sp., K. hispidula (Del.) Bég. et Vacc. p.p., K. simplex (Viv.) Hierario p. p., Leontodon cyrenaicum Widder in sched., nomen.) Collected by V. T ä c k h o l m et al., 74 km west of Mersa Matruh. Mma., 23.5.1963.

Leontodon laciniatum (Bertol.) Widder (= Oporinia hispidula (Del.) DC. p. p., O. laciniata Bertol., Millina persica Boiss., Kalbfussia orientalis Jaub. et Sp. p. p., Millina arabica Boiss., p. p., M. hispidula var. tenuiloba Boiss., Leontodon hispidulum var. tenuiloba Boiss., L. arabicum Boiss. p. p., L. laciniatum (Bertol.) Widder ex Bornm., L. hispidum var. tenuilobum Parsa, L. hispidulum Dicks., non Boiss., L. hispidulus var. arabicus (Boiss.) Täckh. p. p.) Add Dl. (south of Amria), Di. to its distribution.

***Thrinicia tripolitana** Sch. Bip. (= T. tuberosa Egyptian records non (L.) Lam. et DC.) The authentic T. tuberosa (L.) Lam. et DC. (= Leontodon tuberosum L.) does not occur in Egypt.

***Picris damascena** Boiss. et Gaill. var. **diffusa** Eig. Collected in Di., Gebl El-Maghara, in three places : Wadi El Maghara, Wadi El-Mizeri'e and Wadi El-Arousiya ; see L. B o u l o s 1960 and 1964. Also in Naqb El-Aqaba



Hedypnois cretica (L.) Dum. - Cours. subsp. *ramosa* Täckh. et Boulos