

**Gnaphalium pulvinatum** DELILE, Fl., Aegypt, 122 t. 44, fig. 1 (1812).—HOOKER f., l. c. 289 (1881).

Nom. tib. Yomo (sec E. K.)

Hab. Tibet: Nam station along Kyi Chu (4 aug. SM 96821).

Distr. India, Egypt.

**Ixeris chinensis** subsp. **versicolor** KITAMURA in Tokyo Bot. Mag. XLIX, 283 (1935).

*Ixeris versicolor* DC. *I. chinensis* NAKAI sec HAND.-MAZT. in Acta Hort Goth. XII, 352 (1938).

Hab. Tibet: Shigatse, Techen-populan (3 jun. SM 96904, (26 jun. SM 96893), circa Lhasa, Kyanko (16 sept. SM 96901).

Stem 2-13 cm. long. Flowers white.

Distr. Eastern Siberia, China, Korea.

**Jurinea Wardii** HAND.-HAZT. in Journ. Bot. 76, 290 (1938).

Hab. Tibet: Lhasa, prope Potala palace (20 aug. SM 96866), circa Shigatse, mt. Dekupailaja (21 jun. SM 96874 ante anthesin).

Distr. Southern Tibet, Sanga Chöling.

**Lactuca** (§ *Aggregatae*) **Kawaguchii** KITAMURA sp. nov.

Affinis *L. porphyrea* differt involucro brevior (8 mm. longo), squamis 3, flosculis minoribus.

Radix perpendicularis superne 3 mm. diametro, inferne ramosa, apice caulibus pluribus onusta. Caulis 6, 2.8-3 cm. altus sursum incrassatus apice 8-12 mm. latus in sicco, glaber leviter purpurascens. Folia caulina media circ. 5 cm. longa patentia glabra, petiolo 3 cm. longo, leviter purpurascens, lamina elliptica 2 cm. longa 1.1 cm. lata apice rotundata margine mucronulato-dentata, textura crassiuscula, folia superiora radiantia 2.5-4 cm. longa, petiolo 1.2-2 cm. longo dilatato, 6-8 mm. lato leviter purpurascens, lamina elliptica 1.5-2 cm. longa 9-14 mm. lata mucronulato-dentata, trinerviata. Capitula ad apices caulium aggregata circ. 50, foliis bractealibus lineari-lanceolatis apice pilosis suffulta, pedunculis 1-1.5 mm. longis. Involucrum tubulosum 7 mm. longum 2-2.2 mm. latum in sicco, squamae uniserialis 3, oblongae 7 mm. longae 3 mm. latae apice rotundatae hyalino-marginatae dorso viridescens. Corolla 14-15 mm. longa purpurascens, pars tubi 8-8.5 mm. longa, ligula 3 mm. lata. Antherae 3.5 mm.

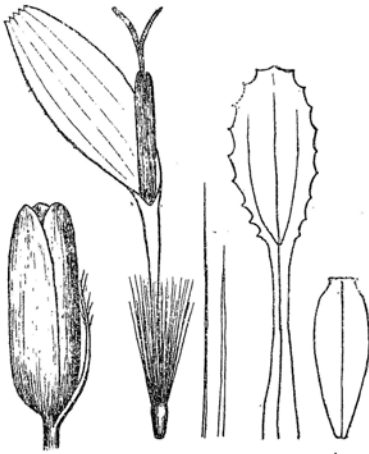


Fig. 8 *Lactuca Kawaguchii*  
KITAMURA

longae fusco-viridescens. Pappus deciduus 6 mm. longus duplex, setis exterioribus 5 mm. longis albis latiusculis integris, setis interioribus 6 mm. longis gracilibus sub lente minute scabris apice attenuatis ferrugineis. Achenia compressa glabra castanea

longae fusco-viridescens. Pappus deciduus 6 mm. longus duplex, setis exterioribus 5 mm. longis albis latiusculis integris, setis interioribus 6 mm. longis gracilibus sub lente minute scabris apice attenuatis ferrugineis. Achenia compressa glabra castanea

facie plus minus unistriata, 2.8 mm. longa 1 mm. lata. Receptaculum nudum.

Hab. Tibet: circa Lhasa, mt. Tsala (11 oct. 1914 E. KAWAGUCHI SM 96856).

This is a distinct species with 3 florets and 3 involucre scales. All plant somewhat purplish.

**Leibnitzia ruficoma** (FRANCHET) KITAMURA in Journ. Jap. Bot. XIV, 297 (1938).

*Gerbera ruficoma* FRANCHET in Journ. de Bot. II, 67 (1888).—BEAUV. in Bull. Soc. Bot. Gen. 2. s. II, 48 (1910).—HAND.-M.ZT., Symb. Sin. 1176 (1936).

Hab. Tibet: circa Lhasa, mt. Dela (16 sept. SM 96944).

Distr. China: Yunnan, Szechuan.

This specimen is an autumnal form. Leaves 9–10 cm. long. Pappus 7 mm. long purple brown. Achenes 6.5–9 mm. long, longly beaked. Inner involucre scales 17–20 mm. long.

**Leontopodium nanum** (HOOKER f. et THOMSON) HAND.-M.ZT. in Beih. Bot. Centr. XLVI, 111 (1928). *Antennaria nana* HOOKER f. et THOMS. in HOOKER f., l. c. 278 (1881).

Hab. Tibet: Shigatse, Tehen-populan (3 jun. SM 96821).

**Leontopodium Stracheyi** CLARKE ex HEMSL. in Journ. Linn. Soc. XXX, 196 (1894).

Hab. Tibet: circa Lhasa, mt. Yachu (1 sept. SM 96816), mt. Elba (23 aug. SM 96807), circa Shigatse, mt. near Linbun rivulet (29 jul. SM 96822).

**Ligularia Ghatsukupa** KITAMURA sp. nov.

*L. sibirica* affinis sed foliis superioribus non vaginatis, involucri latioris phyllis 12.

Caulis ultra 38 cm. altus incrassatus 13 mm. latus in sicco inferne glabratus simplex, apice racemosim ramosus, arachnoideus. Folia radicalia longe petiolata, lamina reniformia 23 cm. longa et lata apice rotundata basi truncata margine mucronulato-dentata utrinque plus minus arachnoidea penniperviata, nervis secundariis utrinque 8, petiolo exalato. Folia caulina inferiora petiolata, petiolo 5 mm. longo anguste alato basi non dilatato, lamina elliptica 13 mm. longa 10.5 cm. lata apice rotundata basi

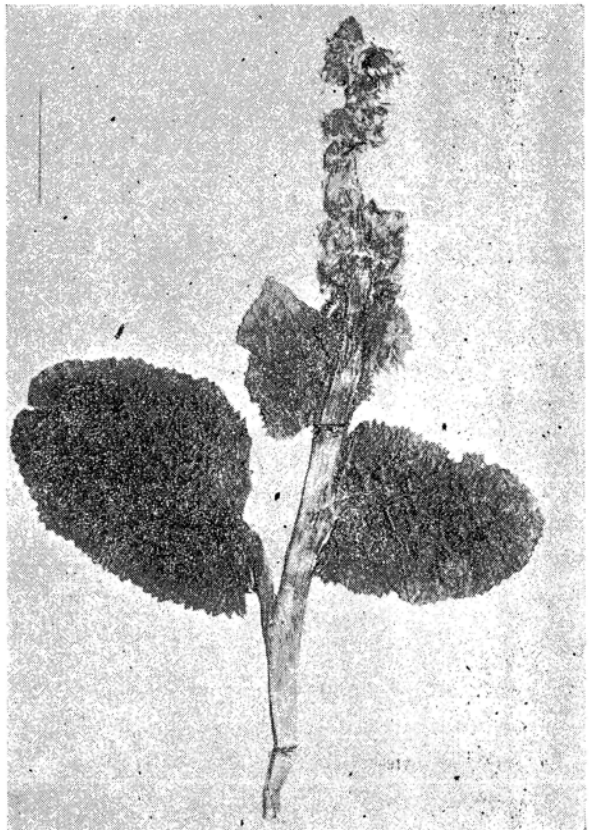


Fig. 9 *Ligularia Ghatsukupa* KITAMURA