

等在福王草属中建立的 *Euprenanthes* 亚属中一个成员。

严格地说,我们这个新属更接近莴苣属 *Lactuca* L. 而与福王草属差别甚大。它与后者仅具有表面的相似性,例如,两者都具少数紫红色舌状花,内层总苞片 5 枚。

紫菊属 新属

Notoseris Shih, gen. nov. (Lactuceae—Compositae)

——*Lactuca* sect. *Prenanthesiae* Franch. in Journ. de Bot. 9: 291, 1895, p. p. syn. nov.

Planta perennis. Caules erecti, superne saepe paniculato-ramosi, raro simplices. Folia alterna, divisa vel indivisa, petiolata vel sessilia. Calathidia homogama, 3—5-flora. Involucrum campanulatum, cernuum, erectum vel inclinatum, calyculatum. Receptaculum nudum, planum. Involucri phylla 3—5-seriata, imbricata, purpurea, externa mediaque breviora, interna longiora, omnia apice obtusa, rotundata vel acuta. Flosculi purpurei, 3—5 in numero, ligulati, ligulis apice truncatis, obscure minute 5-fidis, tubis ad faucem albo-pilosis. Antherae basi sagittatae, acuminatae. Styli rami tenues. Achaenia anguste oblanceolata, dorsi-ventraliter compressa, purpurea, apice truncata, erostrata, costulata, facie costulis 6—9 in numero, inaequicrassis, prominentibus. Pappi setae 2-seriatae, albae, raro brunneae, obscure minute scabrae, graciles.

Typus generis: *Notoseris psilolepis* Shih

Species 12, Chinae australis tropicae vel subtropicae sylvae incolae.

Genus novum *Lactuceae* L. leviter affine est, achaeniis erostratis bene differt.

A *Prenanthe* L. achaeniis anguste oblanceolatis, dorsi-ventraliter compressis, purpureis, multicostulatis, facie costulis 6—9 in numero, inaequicrassis, prominentibus praeditis et corollarum tubis ad faucem albo-pilosis bene differt.

多年生草本。茎直立,上部圆锥花序分枝,极少不分枝。叶互生,不分裂或分裂,有叶柄或无叶柄。头状花序同型,有 3—5 枚,小花。总苞钟状,下垂,直立或歪斜,有小苞片。花托平,无托毛。总苞片 3—5 层,覆瓦状排列,紫色,中外层较短,内层较长,全部总苞片顶端急尖,钝或圆形。小花 3—5 枚,紫色,舌状,顶端截形,有不明显的 5 微齿,花冠管喉部被白色疏柔毛。花药基部箭头形渐尖。花柱分枝细。瘦果倒披针形,背腹压扁,紫色,最宽处在瘦果上部,自最宽处向下沿两侧边缘纺锤状弧曲,顶端截形,无喙,每面有 6—9 条高起的小纵肋。冠毛刚毛 2 层,白色,少褐色,不明显细锯齿状,易脆折。

新属与莴苣属 *Lactuca* L. 接近,区别在于前者瘦果无喙。与福王草属 *Prenanthes* L. 的区别则更为明显,前者瘦果背腹压扁,倒披针形,最宽处在瘦果上部并由此向上沿边缘有极短的纺锤状弯曲,每面有 6—9 条不等粗的小纵肋,花冠管喉部有白色疏柔毛。

1. 全叶紫菊 新种 图版 1:3; 3:4

Notoseris guizhouensis Shih, sp. nov.

N. psilolepidi Shih affinis est, sed foliis longe ovatis, longe lanceolatis vel longe elliptico-lanceolatis bene differt.

Herba perennis (?), altitudo ignota. Caulis erectus, superne paniculato-ramosus, omnino

glaber. Folia caulina media longe ovata, 10 cm longa, 4.5 cm lata, apice acuminata, basi in petiolos late alatos 10 cm longos, 4 cm latos contracta; folia superiora longe lanceolata vel longe elliptico-lanceolata, 8.5—17 cm longa, 1.5—4.5 cm lata, apice acuminata vel acuta, basi attenuata, sessilia; omnia integra, utrinque glabra. Calathidia numerosa, cernua, erecta vel inclinata, ad ramos et caulem inflorescentiam paniculatam formantia. Involucrum campanulatum, 3—4 mm in diametro, phyllis 3-seriatis, externis medisque late ovatis ad lanceolata, 2—3.5 mm longis, 1—1.5 mm latis, apice obtusis vel acutis, internis 5 in numero, longe ellipticis, 1.2 cm longis, 2 mm latis, omnibus glabris, purpureis. Flosculi purpurei, 5 in numero, ligulati, ligulis apice minute 5-fidis, tubis ad faucem albo-pilosis. Achaenia rufo-purpurea, dorsi-ventraliter compressa, anguste oblanceolata, 3.5 mm longa, 1 mm lata, apice truncata, non rostrata, costulata, facie costulis 7 in numero, inaequicrassis, prominentibus. Pappi setae albae, 2-seriatae, 7 mm longae, obscure minute scabrae, fragiles.

Guizhou (贵州): Puan (普安), inter frutices, alt. 2000 m, 7 IX 1957, Exped. Anshun. (安顺队) 1620 (Typus, PE).

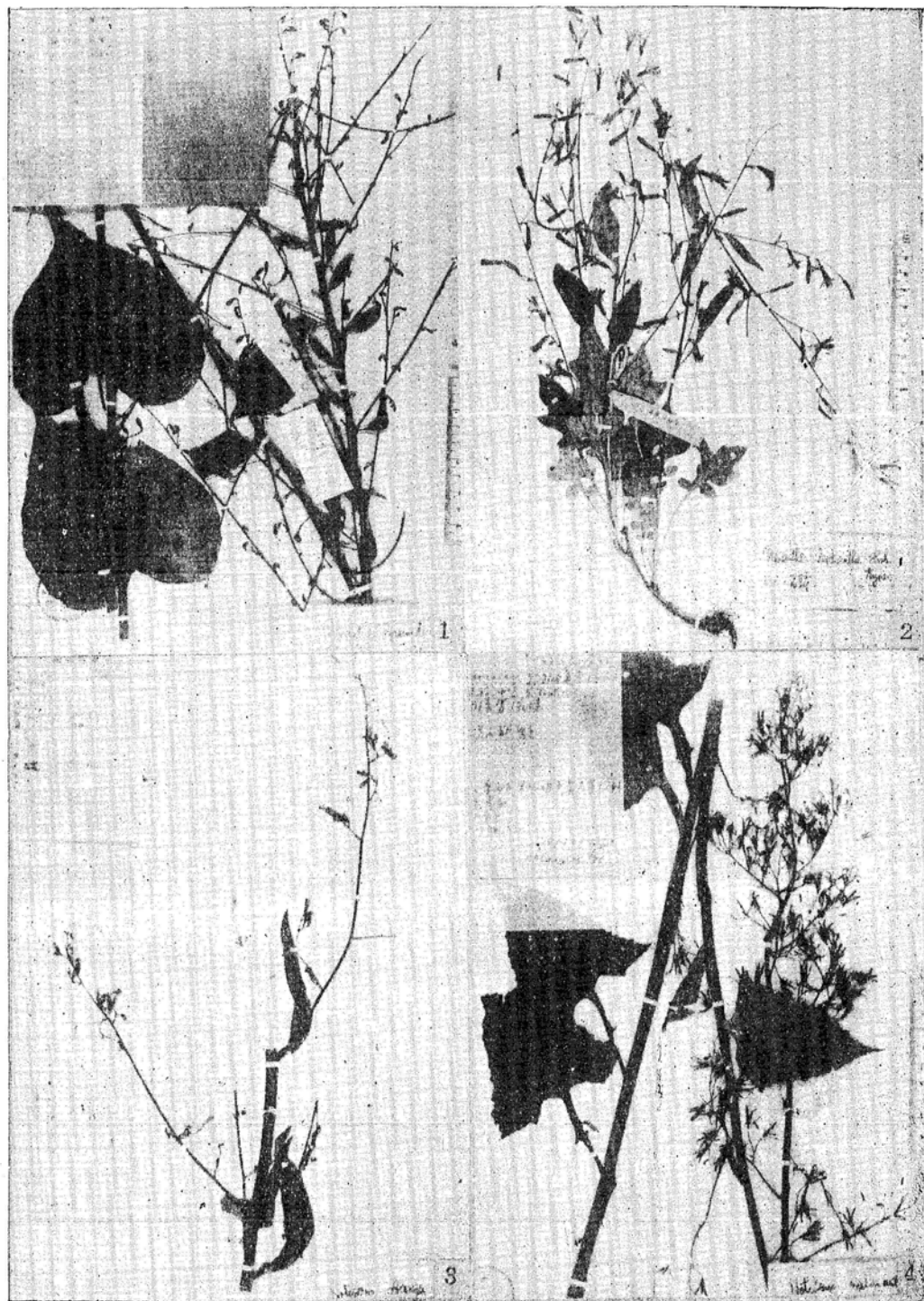
与光苞紫菊 *Notoseris psilolepis* Shih 接近, 但本种叶长卵形、长披针形或长椭圆状披针形, 极易与后者相区别。

2. 光苞紫菊 新种 图 2; 图版 3: 3

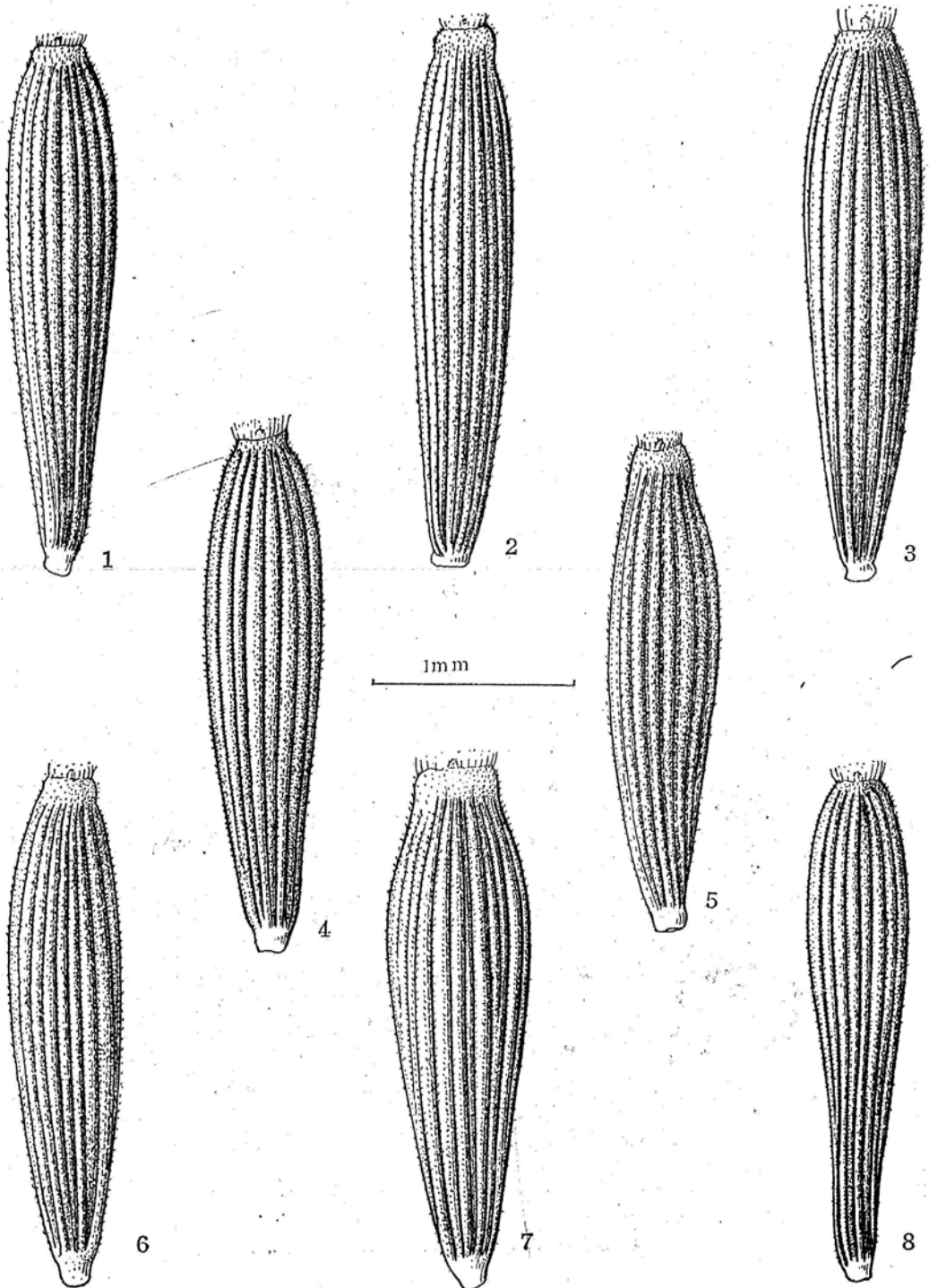
Notoseris psilolepis Shih, sp. nov.

Herba perennis. Caulis solitarius, erectus, 0.3—1.3 m altus, basi 3 mm in diametro, superne paniculato-ramosus, omnino glaber. Folia basalia, inferiora mediaque hastata, ovato-hastata vel triangulari-hastata, ovato-cordata, 7—14 cm longa, 4.5—7 cm lata, apice acuta vel acuminata, margine inaequaliter denticulata, apice dentium apiculato, petiolis ad 21 cm longis; folia superiora basalibus, inferioribus mediisque similia vel sagittato-triangularia vel oblique triangularia, minora, breviter petiolata, petiolis ad 2 cm longis; suprema sub inflorescentia elliptica, 4—6.5 cm longa, 2 cm lata, apice acuminata, basi cuneata, vix petiolata; omnia utrinque aspera, strigosiuscula. Calathidia numerosa vel pauca, ad ramos et caulem inflorescentiam paniculatam amplam vel anguste formantia, cernua, erecta vel inclinata. Involucrum calyculatum, campanulatum, 1.3 cm longum, 3 mm in diametro, phyllis 3-seriatis, externis ovatis, 2—2.5 mm longis, 1 mm latis, mediis ovato-lanceolatis, 4 mm longis, 1 mm latis, internis 5 in numero, longe lineari-ellipticis vel lineari-ellipticis, 1.4 cm longis, 1.5 mm latis, omnibus purpureis, glabris, apice obtusis. Flosculi purpurei, 5 in numero ligulati. Corollae 1.4 cm longae, tubis 6 mm longis, ad faucem albo-pilosis, ligulis 8 mm longis, apice truncatis, acute 5-fidis. Achaenia anguste oblanceolata, dorsi-ventraliter compressa, atropurpurea, 6 mm longa, 1 mm lata, apice truncata, non rostrata, costulata, facie costulis 7 in numero, inaequicrassis, prominentibus. Pappi setae albae, 2-seriatae, 8 mm longae, obscure minute scabrae.

Hubei (湖北): Lichuan (利川), in sylvis, 4 X 1957, G. X. Fu (傅国勋) 1817; Jianshi (建始), 29 IX 1951, Zh. H. Qian (钱重海) 1437. Hunan (湖南): Xinning (新



1. 锥序福王草 *Prenanthes pyramidalis* Shih; 2. 细花福王草 *P. leptantha* Shih; 3. 贵州紫菊 *Notoseris guizhouensis* Shih; 4. 黑花紫菊 *N. melanantha* (Franch.) Shih



紫菊属一些种的瘦果示意 Achenes of some species of *Notoseris* Shih 1. 云南紫菊 *N. yunnanensis* Shih; 2. 黑花紫菊 *N. melanantha* (Franch.) Shih; 3. 光苞紫菊 *N. psilolepis* Shih; 4. 全叶紫菊 *N. guizhouensis* Shih; 5. 菱叶紫菊 *N. rhombiformis* Shih; 6. 多裂紫菊 *N. henryi* (Dunn) Shih; 7. 南川紫菊 *N. porpyrolepis* Shih; 8. 细梗紫菊 *N. gracilipes* Shih. (冀朝祉绘 drawn by Ji Chao-zhen)