

8. Involucral bracts all naked, outer bracts slightly squarrose, straight . . . . *P. eichleri*  
 – Involucral bracts always with a single line of short and strong to slender hairs along midrib on abaxial side of bracts, outer bracts straight and upright to conspicuously squarrose and recurved . . . . . *P. burbridgei*
9. Outer involucral bracts over whole length or at least at tip distinctively recurved, upright to strongly squarrose . . . . . 10  
 – All involucral bracts straight, upright, the outer sometimes slightly squarrose . . . 11
10. Outer involucral bracts squarrose and recurved, numerous, often appearing to descend on peduncule; peduncules with few to numerous bracts close to capitulum or over whole length of peduncule, midrib on abaxial side of involucral bracts naked or with short hairs; achenes with a slender cuspid . . . . . *P. squarrosa*  
 – Outer involucral bracts upright to slightly squarrose, tips recurved, involucre compact, not descending on peduncule, peduncules with 0–2 bracts close to capitulum, midrib on abaxial side of involucral bracts always naked, achenes with a rather strong cuspid . . . . . *P. compacta*
11. At least some outer involucral bracts wider than inner bracts, broadly obovate, ovate or cordate, 1,5–5,0 mm wide . . . . . 12  
 – Outer involucral bracts not as wide as inner bracts or rarely of same width, lanceolate to narrowly obovate or linear, 0,5–1,1(1,6) mm wide . . . . .  
 . . . . . *P. angustifolia* (subsp. *angustifolia*)
12. Margin of outer involucral bracts with conspicuous, often bristly hairs towards base, midrib on abaxial side of bracts always naked . . . . . *P. wagenitzii*  
 – Margin of involucral bracts always naked; midrib on abaxial side of involucral bracts naked or with hairs . . . . . *P. drummondii*

### Description of new taxa

*Picris burbridgei* S. Holzapfel, **spec. nova** – Fig. 1.

Typus: [Australia, New South Wales], Kunghur, ca. 12 miles SSW of Murwillumbah, 30. 11. 1965, *Constable 6579* (holo- NSW 100977).

Herba annua (vel perennis?), 50–120 cm alta. Caulis crassus, erectus, ramosus vel ramossissimus (apice interdum irregulariter umbellatim ramosus), tota longitudine pilis bihamatis ancoriformibus basi saepe rigidissimis obtectus. Folia basalia 10–20 cm longa, 1,0–2,5 cm lata, anguste lanceolata vel anguste ovata, breviter petiolata, margine mucronulata vel integra; folia caulina numerosa, (2)4–20 cm longa, (0,3)0,4–2,5 cm lata, lanceolata vel anguste lanceolata, petiolata vel sessilia; superiora sessilia, utrinque pilis bihamatis ancoriformibus rigidis, ad marginem etiam bifurcatis obtecta. Pedunculi erecti, 1–6 cm longi, nudi vel pilis bihamatis ancoriformibus obtecti, interdum squamis paucis squarrosis vel verticillatis, obovato-acutis vel lanceolatis obsiti. Capitula plura, ramos terminantia, ca. 30–45-flora, fructifera ca. 0,9–1,3 cm longa, ca. 0,5–0,6(0,7) cm diametro. Involucre polyphyllum e squamis 28–40 lanceolatis, supra nudis, inferne semper pilis crassis vel gracilibus 0,3–0,6(1,5) mm longis, simplicibus rarissime bifurcatis vel bihamatis in serie singulari obsitis. Squamae exteriores 3-vel 4-seriatae erectae vel squarrosae vel reflexae, extimae 3,5–5,0(7,5) mm longae, 0,6–1,4(1,5) mm latae, longissimae 5,5–9,5 mm longae, 0,8–1,4(1,5) mm latae; squamae interiores 9,0–12,0(14,0) mm longae, (1,4)1,6–2,1 mm latae, squamis longissimis exterioribus subaequimag-

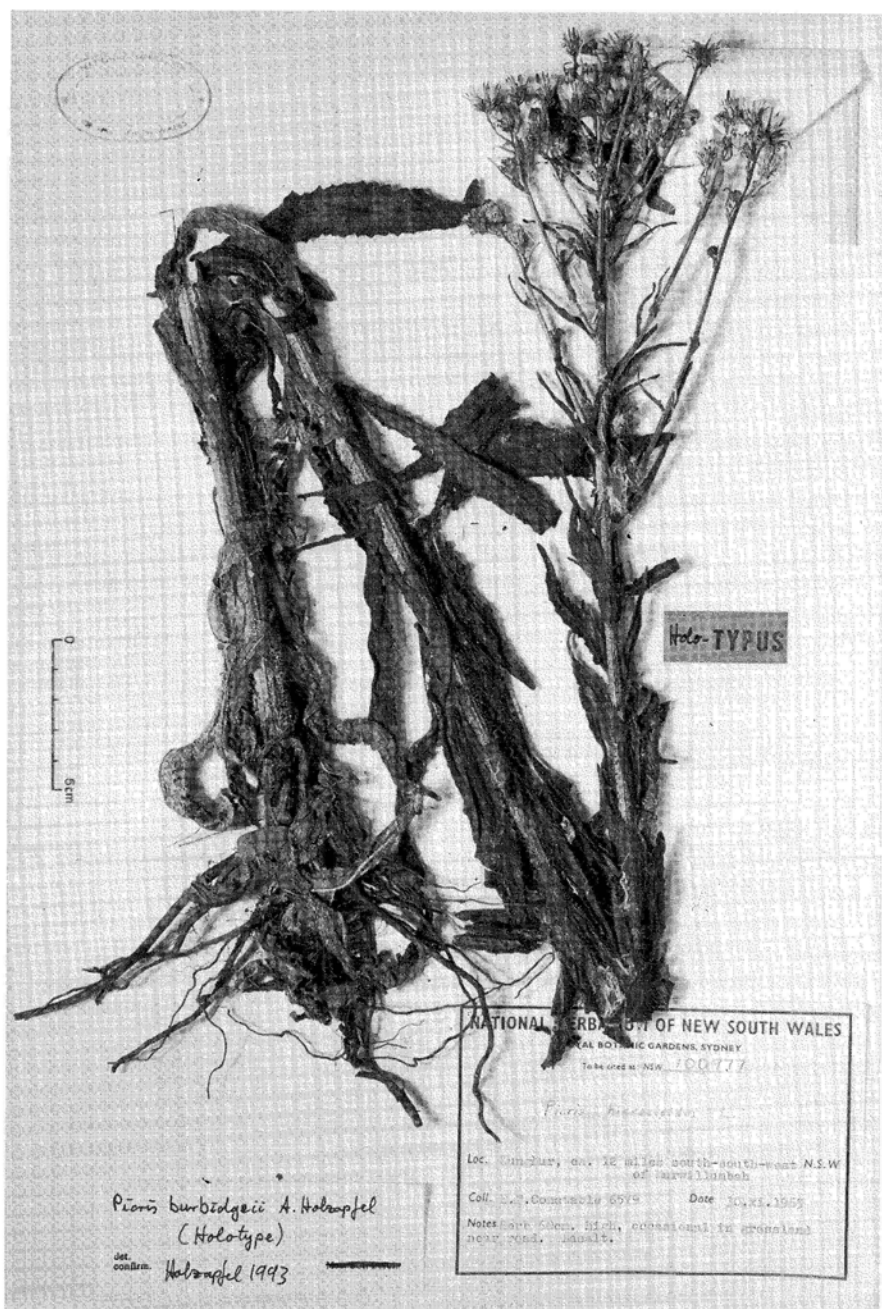


Fig. 1. Holotype of *Picris burbridgei* (NSW).

nae. Corollae 9,0–13,0 mm longae, in sicco ochraceae; ligula 5,0–9,0 mm longa, 1,0–2,0 mm lata, quinque-dentata; tubus nudus vel apice sparse pilis tenuibus, simplicibus, brevibus obtusis, antherae 1,3–2,0 mm longae; stylus 5,5–9,0 mm longus. Achenia conformia, brunnea, 4,0–5,2 mm longa (incl. cuspidem), 0,8–1,1 mm diametro, anguste fusiformia, ad apicem gradatim in cuspidem brevem (0,4–0,9 mm longam) attenuata, longitudinaliter quinque-costata, transverse rugosa vel transverse costata (ca. 5,0–6,6 costae per mm longitudinis achaenii) et pappo 5,0–8,0 mm longo facile deciduo coronata. Rarii pappi ca. 50–80, pinnulis multis longis dense obsiti (plumosi), basi in annulum conjuncti. Receptaculum nudum, alveolatum, ca. 3,5–0 mm diametro. Squamae acheniis delapsis reflexae.

Nancy Tyson Burbidge (1912–1977) hanc plantam dedicavi.

Distribution: Australia: New South Wales: coastal regions and N-Tablelands; Queensland: Darling Downs, Moreton and Wide Bay Districts (probably also Cape Yorke Peninsula). – New Zealand.

*Picris compacta* S. Holzapfel, *spec. nova* – Fig. 2.

Typus: [Australia, Western Australia], Crawley, 10. 1941, *Bennett* (holo- PERTH).

Herba annua (?), ca. 90–120 cm alta. Caulis erectus, ramosus (apice interdum irregulariter umbellatim ramosus), tota longitudine pilis bihamatis gracilibus ancoriformibus obtectus. Folia basalia ca. 16 cm longa, ca. 1,5 cm lata, oblanceolata, petiolata, margine mucronulata; folia caulina numerosa, (1,5)9–14 cm longa, (0,2)0,6–1,3 cm lata, lanceolata vel linearia, petiolata vel sessilia; superiora sessilia, utrinque pilis bihamatis ancoriformibus, ad marginem etiam bifurcatis obtecta. Pedunculi crassi erecti, 1–5 cm longi, nudi vel pilis bihamatis ancoriformibus gracilibus obtecti, interdum squamis paucis squarrosis vel verticillatis, lanceolatis obsiti. Capitula pauca, ramos terminantia, ca. 35–50 flora, fructifera 1,2–1,4 cm longa, 1,0–1,2 cm diametro. Involucrum polyphyllum e squamis ca. 40 lanceolatis semper glabris. Squamae exteriores 3-seriatae, erectae vel squarrosae, apice reflexae, extimae ca. 4,0–6,0 mm longae, ca. 1,0–1,5 mm latae, longissimae ca. 7,0–11,5 mm longae, ca. 2,0 mm latae; squamae interiores ca. 12,0–14,0 mm longae, ca. 2,0–2,5 mm latae, squamis longissimis exterioribus subaequimagnae. Flores ignoti. Achenia conformia, brunnea, ca. 6,0–7,5 mm longa (incl. cuspidem), ca. 1,1–1,2 mm diametro, anguste fusiformia, ad apicem gradatim in cuspidem longam (ca. 1,7–2,1 mm) crassam attenuata, longitudinaliter quinque-costata, transverse rugosa vel transverse costata (ca. 3,3–3,9 costae per mm longitudinis achaenii) et pappo 8,2–9,2 mm longo facile deciduo coronata. Rarii pappi ca. 50, pinnulis multis longis dense obsiti (plumosi), basi in annulum conjuncti. Receptaculum nudum, alveolatum, ca. 4,5–6,0 mm diametro.

Distribution: Australia: Western Australia: Perth, incompletely known.

*Picris conyzoides* Lack & S. Holzapfel, *spec. nova*

Typus: [Australia, Queensland], Kangaroo Point, near Brisbane, 12.12.1934, *C.T. White 10228* (holo- NY, iso- BRI (AQ 270016), K).