

nae. Corollae 9,0–13,0 mm longae, in sicco ochraceae; ligula 5,0–9,0 mm longa, 1,0–2,0 mm lata, quinquedentata; tubus nudus vel apice sparse pilis tenuibus, simplicibus, brevibus obtusis, antherae 1,3–2,0 mm longae; stylus 5,5–9,0 mm longus. Achenia conformia, brunnea, 4,0–5,2 mm longa (incl. cuspidem), 0,8–1,1 mm diametro, anguste fusiformia, ad apicem gradatim in cuspidem brevem (0,4–0,9 mm longam) attenuata, longitudinaliter quinquecostata, transverse rugosa vel transverse costata (ca. 5,0–6,6 costae per mm longitudinis achaenii) et pappo 5,0–8,0 mm longo facile deciduo coronata. Radii pappi ca. 50–80, pinnulis multis longis dense obsiti (plumosi), basi in annulum conjuncti. Receptaculum nudum, alveolatum, ca. 3,5–0 mm diametro. Squamae acheniis delapsis reflexae.

Nancy Tyson Burbidge (1912–1977) hanc plantam dedicavi.

Distribution: Australia: New South Wales: coastal regions and N-Tablelands; Queensland: Darling Downs, Moreton and Wide Bay Districts (probably also Cape Yorke Peninsula). – New Zealand.

*Picris compacta* S. Holzapfel, *spec. nova* – Fig. 2.

Typus: [Australia, Western Australia], Crawley, 10. 1941, *Bennett* (holo- PERTH).

Herba annua (?), ca. 90–120 cm alta. Caulis erectus, ramosus (apice interdum irregulariter umbellatim ramosus), tota longitudine pilis bihamatis gracilibus ancoriformibus obtectus. Folia basalia ca. 16 cm longa, ca. 1,5 cm lata, oblanceolata, petiolata, margine mucronulata; folia caulina numerosa, (1,5)9–14 cm longa, (0,2)0,6–1,3 cm lata, lanceolata vel linearia, petiolata vel sessilia; superiora sessilia, utrinque pilis bihamatis ancoriformibus, ad marginem etiam bifurcatis obtecta. Pedunculi crassi erecti, 1–5 cm longi, nudi vel pilis bihamatis ancoriformibus gracilibus obtecti, interdum squamis paucis squarrosis vel verticillatis, lanceolatis obsiti. Capitula pauca, ramos terminantia, ca. 35–50 flora, fructifera 1,2–1,4 cm longa, 1,0–1,2 cm diametro. Involucrum polyphyllum e squamis ca. 40 lanceolatis semper glabris. Squamae exteriores 3-seriatae, erectae vel squarrosae, apice reflexae, extimae ca. 4,0–6,0 mm longae, ca. 1,0–1,5 mm latae, longissimae ca. 7,0–11,5 mm longae, ca. 2,0 mm latae; squamae interiores ca. 12,0–14,0 mm longae, ca. 2,0–2,5 mm latae, squamis longissimis exterioribus subaequimagnae. Flores ignoti. Achenia conformia, brunnea, ca. 6,0–7,5 mm longa (incl. cuspidem), ca. 1,1–1,2 mm diametro, anguste fusiformia, ad apicem gradatim in cuspidem longam (ca. 1,7–2,1 mm) crassam attenuata, longitudinaliter quinquecostata, transverse rugosa vel transverse costata (ca. 3,3–3,9 costae per mm longitudinis achaenii) et pappo 8,2–9,2 mm longo facile deciduo coronata. Radii pappi ca. 50, pinnulis multis longis dense obsiti (plumosi), basi in annulum conjuncti. Receptaculum nudum, alveolatum, ca. 4,5–6,0 mm diametro.

Distribution: Australia: Western Australia: Perth, incompletely known.

*Picris conyzoides* Lack & S. Holzapfel, *spec. nova*

Typus: [Australia, Queensland], Kangaroo Point, near Brisbane, 12.12.1934, *C.T. White 10228* (holo- NY, iso- BRI (AQ 270016), K).

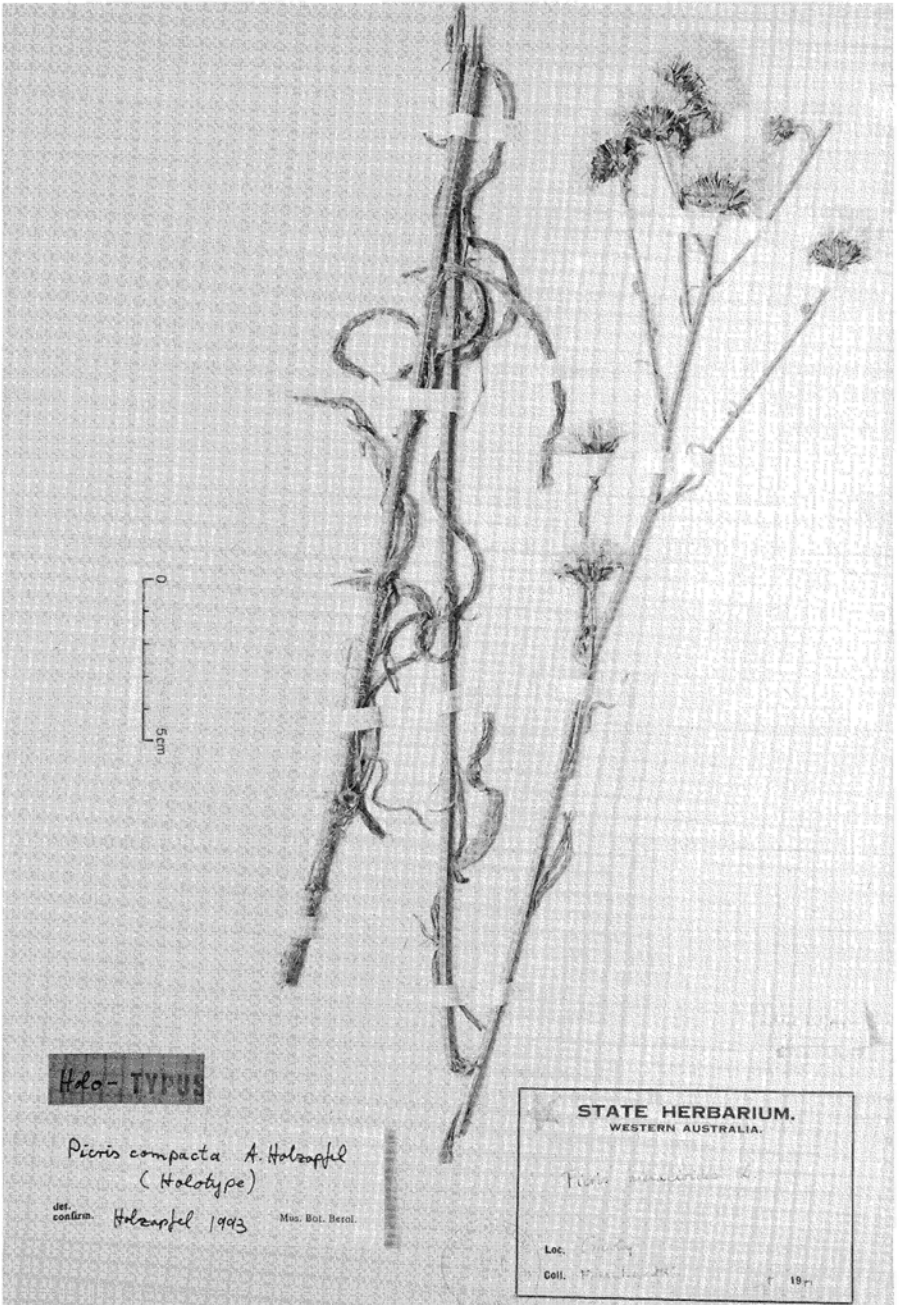


Fig. 2. Holotype of *Picris compacta* (PERTH).