

obsitus; antherae ca. 1,5–3,0 mm longae; stylus ca. 8,0–10,2 mm longus. Achenia conformia, brunnea, 7,0–7,8 mm longa (incl. cuspidem), 1,0–1,4 mm diametro, anguste et longe fusiformia, ad apicem gradatim in cuspidem longam (ca. 1,1–2,3 mm) crassam attenuata, longitudinaliter quinquecostata, transverse rugosa vel transverse costata (ca. 3,3–4,0 costae per mm longitudinis achaenii) et pappo 7,0–10,2 mm longo facile deciduo coronata. Radii pappi ca. 50–60, crassi, pinnulis multis longis dense obsiti (plumosi), basi in anulum conjuncti. Receptaculum nudum, alveolatum, ca. 2,5–7,7 mm diametro. Squamae acheniis delapsis reflexae.

James Drummond I. (1782–1864) hanc plantam dedicavi.

Distribution: Australia: Western Australia, SW region (Oldfield River), incompletely known.

*Picris eichleri* Lack & S. Holzapfel, spec. nova – Fig. 3.

Typus: [Australia, New South Wales], Ben Lomond, 12.99 [Dec. 1899], Maiden (holo- NSW 128990 p.p., specimen with basal leaves; iso- NSW 128990 p.p., specimen without basal leaves).

Herba annua (vel perennis?), 40–140 cm alta. Caulis erectus, ramosus, tota longitudine pilis bihamatis ancoriformibus obtectus. Folia basalia (5)6–17 cm longa, 0,4–1,8 cm lata, anguste obovata, petiolata, margine dentata vel mucronulata; folia caulina pauca, (2) 5–12 cm longa, (0,2) 0,4–1,2 cm lata, anguste lanceolata vel linearia, petiolata; superiora sessilia, utrinque pilis bihamatis ancoriformibus gracilibus vel rigidis, ad marginem etiam bifurcatis obtecta. Pedunculi graciles erecti, 1,5–11,0 cm longi, glabri vel interdum pilis bihamatis ancoriformibus brevibus obtecti, squamis paucis squarrosis vel verticillatis, anguste lanceolatis vel ovatis obsiti. Capitula plura, ramos terminantia, ca. 35–40 flora, fructifera (0,9)1,0–1,1(1,2) cm longa, (0,6)0,7–(0,9)1,1 cm diametro. Involucrum polyphyllum e squamis ca. 28–36 semper glabris. Squamae exteriores anguste lanceolatae vel acute ovatae, uni- vel bi-seriatae, subsquarrosae, extimae ca. 3,4–6,0 mm longae, ca. 0,8–1,7 mm latae, longissimae ca. 6,8–9,4 mm longae, ca. 1,4–2,0 mm latae; squamae interiores lanceolatae ca. (9,0)10,0–11,0 mm longae, ca. 1,3–2,2 mm latae, squamis longissimis exterioribus subaequimagnae. Corollae 12,5–15,0 mm longae, in sicco ochraceae, ligula 9,0–11,5 mm longa, 2,0–2,5 mm lata, quinquentata, tubus apice sparse pilis tenuibus, simplicibus, brevibus obsitus, antherae 3,0–3,7 mm longae; stylus 6,0–8,5 mm longus. Achenia conformia, brunnea, 3,9–5,0 mm longa (incl. cuspidem), 1,0–1,2 mm diametro, fusiformia, ad apicem gradatim in cuspidem brevem (0,3–0,5(0,7) mm) attenuata, longitudinaliter quinquecostata, transverse rugosa vel transverse costata (ca. 4,0–6,7 costae per mm longitudinis achaenii) et pappo 5,0–6,5 mm longo facile deciduo coronata. Radii pappi ca. 35–40, pinnulis multis longis dense obsiti (plumosi), basi in anulum conjuncti. Receptaculum nudum, alveolatum, ca. 3,9–4,5 mm diametro. Squamae acheniis delapsis reflexae.

Hans-Jörg Eichler (1916–1992) hanc plantam dedicavimus.

Distribution: Australia: New South Wales: New England Range and its western spurs.

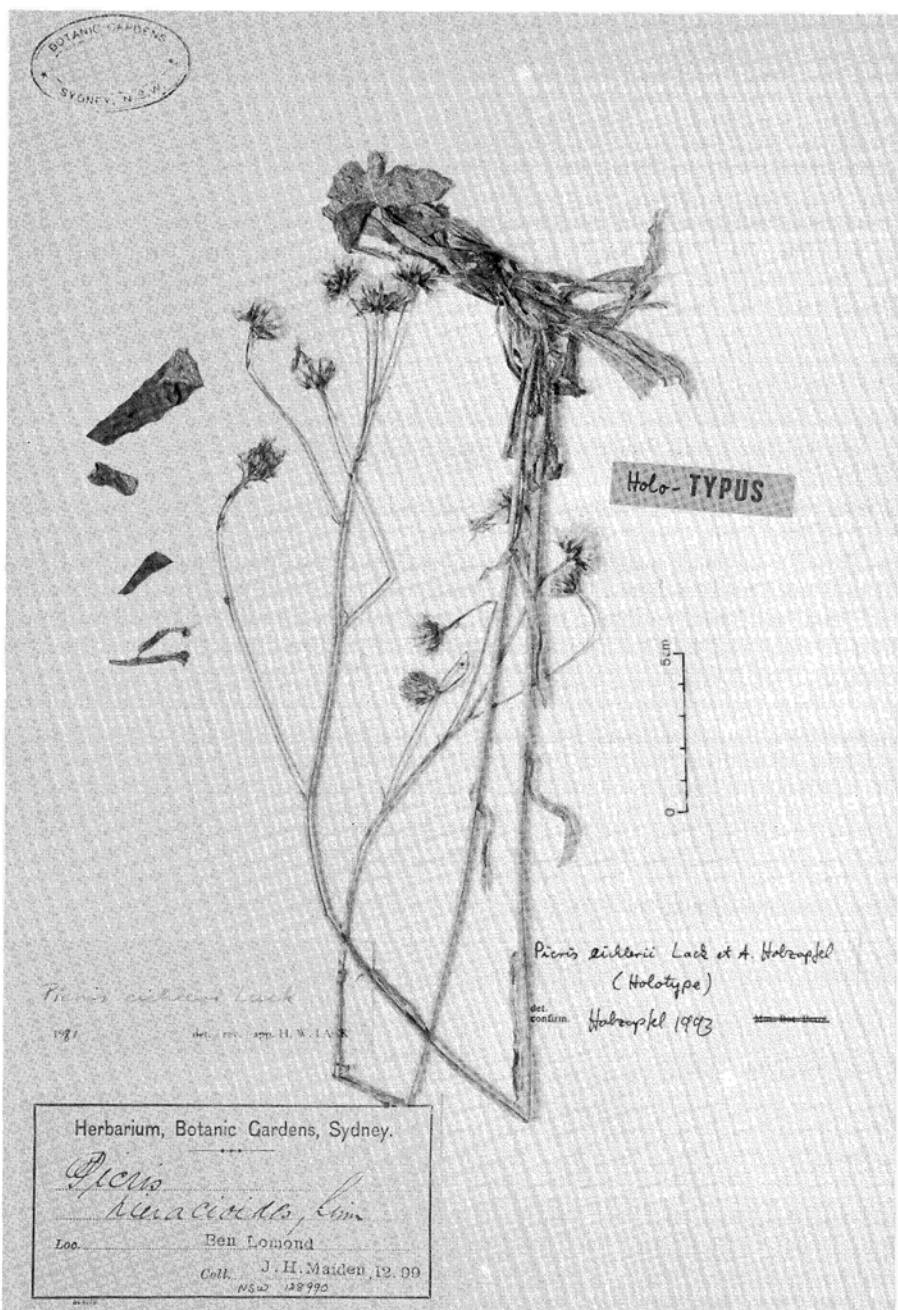


Fig. 3. Holotype of *Picris eichleri* (NSW).