

Carolo Henrico Reehinger vindobonensi (1907-) aulae consuli, musei vindobonensis historiae naturalis rectori emerito et florum iranicae editori.

T y p e : Australia, Queensland, Point Cartwright, 80 km N of Brisbane, 6.XII.1976, L.PEDLEY 4402 (Holotype, B, fig.1). Achenes taken from this specimen have been germinated, cultivated in the Botanical Garden at Berlin-Dahlem (Lack Acc. No.234) and used for determination of the chromosome number; flowering and fruiting material of this progeny has been distributed widely (A,AD,AK,B,BM,BP,BR,BRI,C,CANB,COI,E,F,FI,FR,G,GB,GH,GOET,GZU,H,HAL,HBG,HO,JE,K,L,LD,LE,M,MA,MEL,MO,MPU,NSW,NY,O,P,PERTH,PR,PRC,S,U,UC,US,W,WAG,WU,Z).

O t h e r s p e c i m e n s : Fraser Island, 15.-16.X.1930, C.E. HUBBARD 4415 (BRI,K); about 15 miles SSW of Double Island Point and 27 miles E of Gympie, 21.X.1964, S.L.EVERIST 7728 (BRI,K); Point Halloran, X.1930, F. KUNZE 5457 (K).

E c o l o g y : The new species has been collected so far in mixed forests (Eucalyptus, Casuarina, Banksia etc.) and on sandy slopes, in particular on the coastal dunes in S Queensland.

PICRIS EVAE LACK, SP. NOVA

Herba annua (vel biennis ?) 50 - 170 cm alta, lactifera, caulis crassus (basi ad 2 cm diametro) erectus ad ascendens, ramosus saepe ramosissimus (apice interdum irregulariter umbellatim), obtusangulus, tota longitudine pilis bihamatis ancoriformibus rigidis obtectus. Folia basalia et caulina bene evoluta, (5) 10-15 cm longa, 1-2 cm lata, anguste obovata ad lanceolata, denticulata vel mucronulata, sessilia, nervo medio crasso instructa, utrinque pilis bihamatis ancoriformibus rigidis obtecta. Pedunculi erecti, pilis bihamatis ancoriformibus obtecti, paucis squamis 5-6 mm longis, 0,7-1 mm latis, integris, anguste lanceolatis obsiti. Capitula numerosa (saepe numerosissima), ramos terminantia, (50) 60-80 flora, fructifera 15-20 mm diametro. Involucrum polyphyllum e squamis anguste-lanceolatis, supra nudis, inferne multis pilis crassis 1-3 (11) mm longis tortuosissimis simplicibus, rarissime apice bifurcatis vel bihamatis intertextis in vivo viridibus obtectis. Squamae exteriores 4-6 mm longae, ad 1 mm latae, inferne tota longitudine secundum nervum medium pilis perlongis densissime obtectae, squamae interiores 9 - 12 mm longae, ad 1 mm latae, naviculiformes, margine

late hyalino, inferne basi nudae vel paucis pilis perlongis obtectae, secundum nervum medium - imprimis apice - dense pilis perlongis obtectae. Corollae 10-12 mm longae, in vivo luteae, ligulae 6-8 mm longae, 0,5 - 0,8 (1) mm latae, saepe involutae, quinquentatae, tubo apice sparse pilis tenuibus simplicibus obsito. Stamina c.3 mm longa, antherae c.2 mm longae. Achenia conformia, brunnea vel rufa, 7-8 mm longa, 0,5 mm diametro, anguste et longe fusiformia, ad apicem gradatim in cuspidate longa attenuata, longitudinaliter quinquecostata, transverse rugosa ad transverse costata et pappo 7-8 mm longo facile deciduo coronata. Radii papporum multi, fragiles, multis pinnulis longis dense obsiti (plumosi). Receptaculum nudum, alveolatum. Squamae post dehiscentiam acheniorum reflexae. Numerus chromosomatum $2n = 10$.

Amatae uxori meae Evae hanc plantam dicavi.

T y p e : Australia, Queensland, about 1 km S of Oakey on main road to Toowoomba, 27.XI.1975, T.STANLEY & J.CLARKSON 66 (Holotype, B; upper part of specimen fig.2). Achenes taken from this specimen have been germinated, cultivated in the Botanical Garden at Berlin-Dahlem (Lack Acc. 110, 298) and used for determination of the chromosome number; flowering and fruiting material of this progeny has been widely distributed (A,AD,AK, BM,BP,BR,BRI,C,CANB,COI,E,F,FI,FR,G,GB,GH,GOET,GZU,H, HAL,HBG,HO,JE,K,L,LD,LE,M,MA,MEL,MO,MPU,NSW,NY,O,P, PERTH,PR,PRC,S,U,UC,US,W,WAG,WU,Z).

O t h e r s p e c i m e n s : Ma-Ma Creek road, 4.XII.1962, W.T.JONES 2335 (CANB); W Haldon, 29.XII.1962, L.PEDLEY 1151 (BRI,CANB,K); Hendon, XII.1912, C.T. WHITE (BRI); Warwick, XII.1875, F.M. BAILEY (BRI p.p.); Warwick, III.1911, J.L. BOORMAN (NSW); Warwick road, 19.XII.1960, W.T. JONES (CANB); Freestone, II.1959, G.R.LEE (BRI); Southbrook, 4.XII.1969, L.PEDLEY 3060 (BRI).

E c o l o g y : From the scanty label annotations available at present it is evident that P.evae grows in Eucalyptus forests and on roadsides in tropical SE Queensland.

Material of the two new species has been determined by the collectors as Picris hieracioides L., a widespread eurasian perennial which does not occur in Australasia.

Ripe achenes from the progeny of both type specimens have been offered for exchange in the Index Seminum 1978 of the Botanical Garden at Berlin-Dahlem and are currently

available.

A c k n o w l e d g e m e n t s : Thanks are due to the members of staff at BRI for kindly providing me with recently collected Picris specimens from Queensland; J.R.Edmondson corrected the style of the text,G.Wagenitz kindly went over the manuscript and made valuable suggestions.

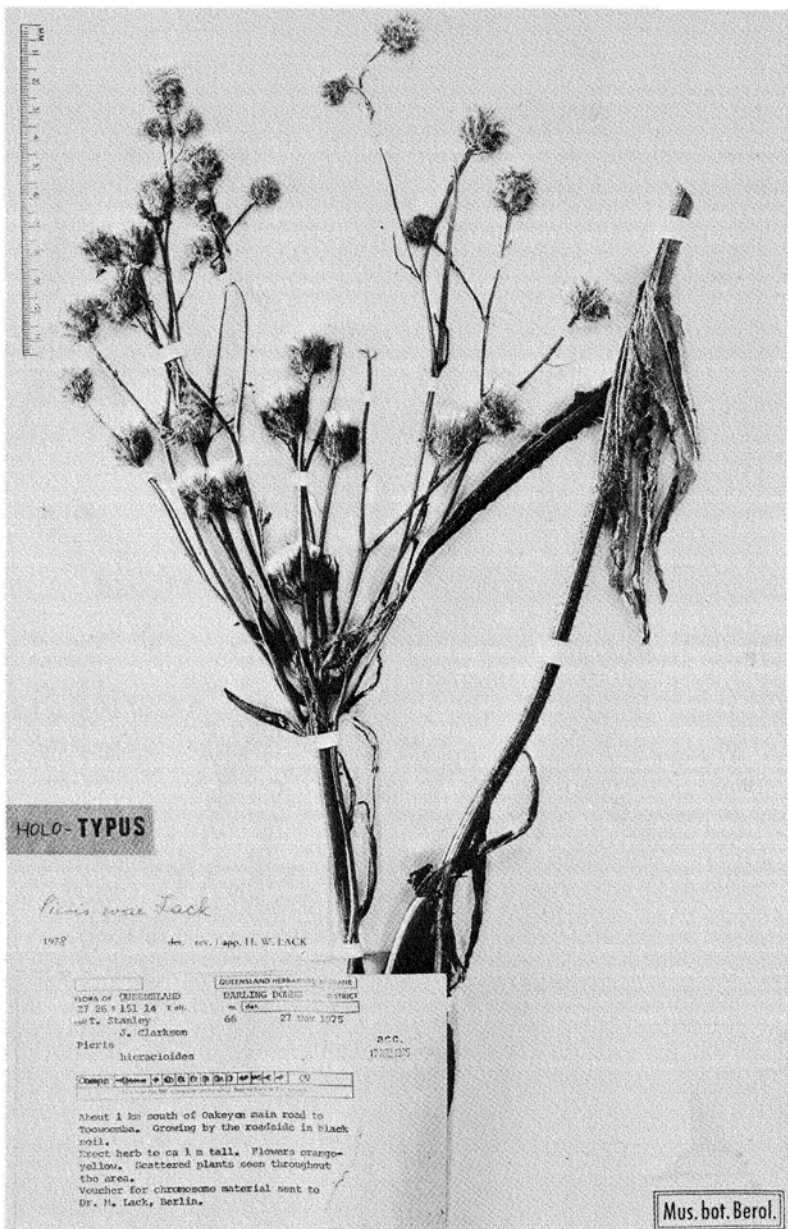


Fig. 2 *Picris evae* Lack, Holotype, upper part of the specimen. Botanisches Museum Berlin-Dahlem.