

ASTERACEAE

Cirsium libanoticum* DC. subsp. *libanoticum

C2 Muğla: Sandras dağ et Köklüce, 22 vii 1947, *Davis* 13627 (E); C4 Antalya: Gazipaşa, Çobanlar yaylası, Delieğrik mevkii, stream margins, 1800m, 19 vii 1981, *H. Sümbül* 1137 (HUB).

A new record for Turkey.

Close to *Cirsium libanoticum* DC. subsp. *lycaonicum* (Boiss. & Heldr.) Davis & Parris, but easily distinguished from it by its wide cauline wings with longer stout spines (10–20mm, instead of 6–10mm) and always winged, spiny inflorescence branches.

This new record was first doubtfully identified by me as *C. cilicicum* Davis & Parris (Sümbül & Erik, 1988: Taşeli Platosu Florasi II, *Doğa Türk. Bot. Derg.* 12: 3, 299) and was first wrongly recorded as *C. libanoticum* DC. subsp. *lycaonicum* (Boiss. & Heldr.) Davis & Parris by Davis & Parris (*Flora of Turkey and the East Aegean Islands* 5: 408, 1975).

***Scorzonera longiana* H.Sümbül, sp. nov. Fig.4.**

Species habitu *S. sericeae* DC. similis sed foliis brevibus atque latis (2–3 × 0.5–0.9cm), undulatis, falcato-curvatis, vaginis foliorum residuis non manifestis, capitulo 10–15mm (non 15–17mm), acheniis pubescentibus differt.

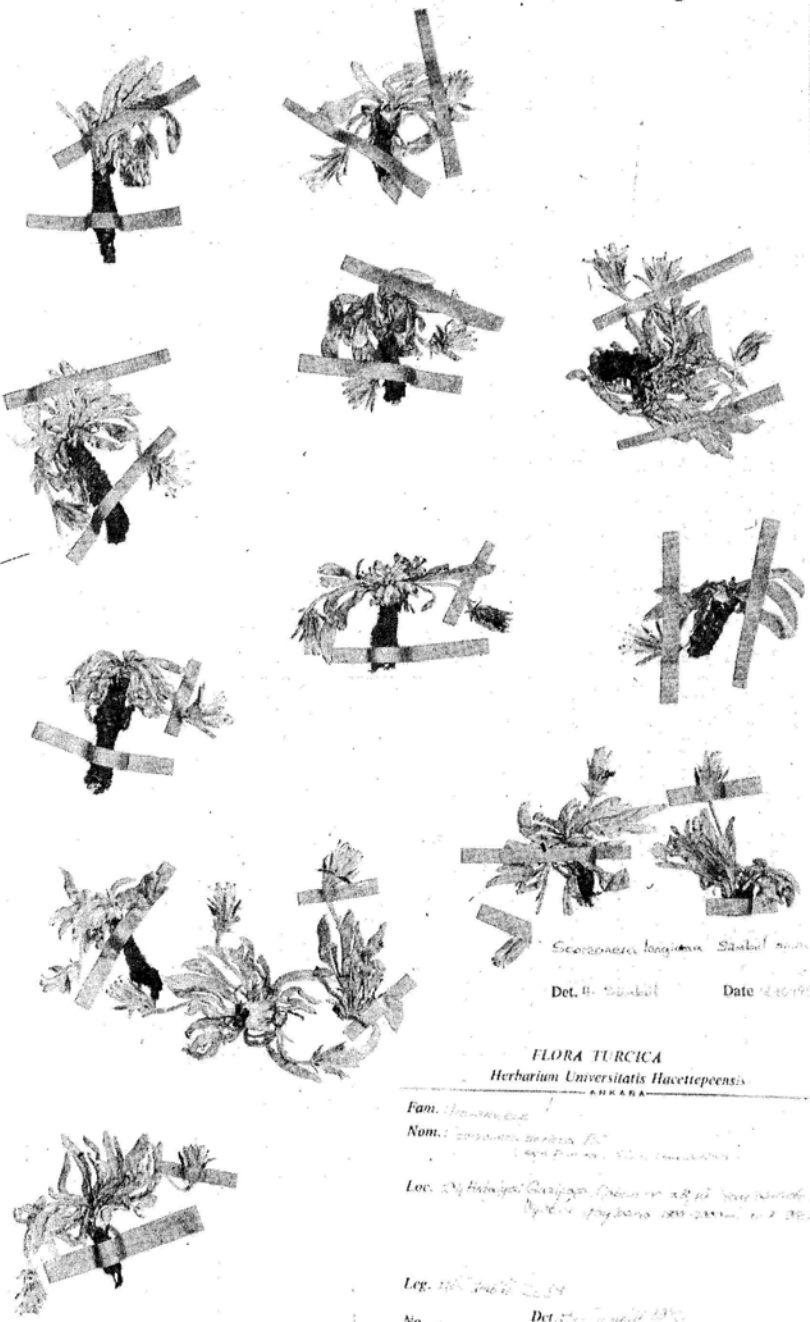
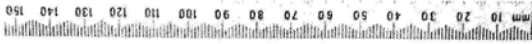
Dwarf greenish-sericeous perennial with vertical, always simple cylindrical root-stock 4–7mm thick, crowned with inconspicuous black papery remains of leaf sheaths. *Flowering stems* (1)–2–5, 3–5cm tall, unbranched. Almost all leaves in a basal rosette, undulate, falcately curved, 2–3 × 0.5–0.9cm, lanceolate, greenish-sericeous, amplexicaul; cauline leaves similar, gradually decreasing in size upwards. *Capitula* 1 per stem, 10–15mm. *Phyllaries* subadpressed hairy; outer phyllaries ovate, acuminate, 3–5 × 1–1.5mm; inner phyllaries narrowly lanceolate, 10–12 × 2–3mm, scarious margined. *Flowers* yellow, exceeding involucre, 7–14 per capitulum, purple striped when dry. *Achenes* 1–2mm (immature), cylindrical, hairy; pappus 2–3mm, cream, plumose below, barbellate above. *Fl.* July.

Type: Turkey C4 Antalya: Gazipaşa from Çobanlar Köyü Yaylası to Oyuklu Yaylası, 1900–2000m, 11 vii 1983, *H. Sümbül* 2239 (holo. HUB; iso. E, K).

Endemic. East Mediterranean (mt) element.

Scorzonera longiana is allied to *S. sericea* DC. but differs in having shorter and broader falcately curved, undulate, lanceolate leaves, remains of leaf sheaths inconspicuous, shorter capitula (10–15mm) and hairy achenes. The new species was first doubtfully identified as *S. sericea* DC. by me (Sümbül & Erik, 1988: Taşeli Platosu Florasi II, *Doğa Türk. Bot. Derg.* 12: 3, 303, 304).

This new species of *Scorzonera* is named after David Long, until recently Curator of the Herbarium at the Royal Botanic Garden, Edinburgh.



Scorzonera longiana Saubol nom. n.
Det. H. Saubol Date 2.10.1930

FLORA TURCICA
Herbarium Universitatis Hacettepeensis
ANKARA

Fam. *Umbelliferae*
Nom.: *Scorzonera longiana* DC.
Loc. *24. Hacıhalil, Gazipaşa, Ordu, 12. 10. 1930*
Leg. *H. Saubol 2.10.1930*
No. *Det. H. Saubol 1930*

FIG. 4. *Scorzonera longiana*. Holotype.