

HABITAT: *Cyrenaica, in litore saxoso-arenaceo prope Ptolemaidem.*

In the subsp. *lagopus* we have instead: lanceolate or lanceolate-elliptical leaves, erect or ascendent, gradually restricted in a long petiole glabrous pubescent. Peduncles of the inflorescence erect or arcuate-ascendent. Spikes on maturity cylindrical 20-65 × 6-8 mm, less villous. Bract 3-4 × 1-1,5 mm, excluding the hairs which are localized in the upper $\frac{1}{2}$, shortly acuminate at apex, with lax hairs. Sepals including the hairs 4 mm long, with shorter and laxer hairs in the upper half. Corolla 4 mm long, exerted over the hairs of the calyx, with glabrous teeth or with a few hairs on the vein. Anthers oval or obovate in shape, more than 1 mm wide, with apical appendix acute and restricted at base.

***Lonicera nummularifolia* Jaub. & Spach ssp. *occidentalis* (Pamp.) Brullo & Furnari, comb. et stat. nov.**

Bas.: *Lonicera persica* Jaub. & Spach var. *occidentalis* Pamp., Nuov. Giorn. Bot. Ital. 35: 581 (1929).

Syn.: *Lonicera arborea* Pamp., L'Agric. Col. 15: 276 (1921), non Boiss. (1838).
Lonicera biflora Cavara, Bull. Soc. Bot. Ital.: 11 (1923), non Desf. (1800).

***Anthemis taubertii* Durand & Barratte ssp. *arenicola* (Pamp.) Brullo e Furnari, stat. nov.**

Bas.: *Anthemis taubertii* var. *arenicola* Pamp., Rend. Sem. Fac. Sc. Univ. Cagliari 8 (2): 77 (1938).

***Tolpis virgata* Bert. ssp. *apolloniae* Brullo & Furnari, subsp. nov.**

Syn.: *Tolpis virgata* auct. fl. cyr. non Bert. (1803).

DIAGNOSIS: A typo differt parte basali caulis et foliorum dense tomentosolanaosa longi pilis albo-sericeis; achaeniis, excluso pappo, 2-2,5 mm longis; setis pappi numero 18-22 varia longitudine.

HOLOTYPE: Cirene, 13.5.1974, *Brullo & Furnari* (CAT).

ICONOGRAPHIA: Fig. 10.

HABITAT: *Cyrenaica, in collibus saxosis calcareis inter Cyrene et Darnis.*

In the specimens of *Tolpis virgata* of Cyrenaica the presence of achenes with pappus formed by 18-22 setae is remarkable, while from literature data and from research carried out by us on herbarium specimens there is a number varying from a minimum of 4 to a maximum of 10-12 setae. Another peculiarity of the Cyrenaica plant is that it has a long dense tomentum in the stem and at the base of the leaves; this is a character which is missing from the specimens coming from other localities in the Mediterranean, which are subglabrous or pubescent in that level.

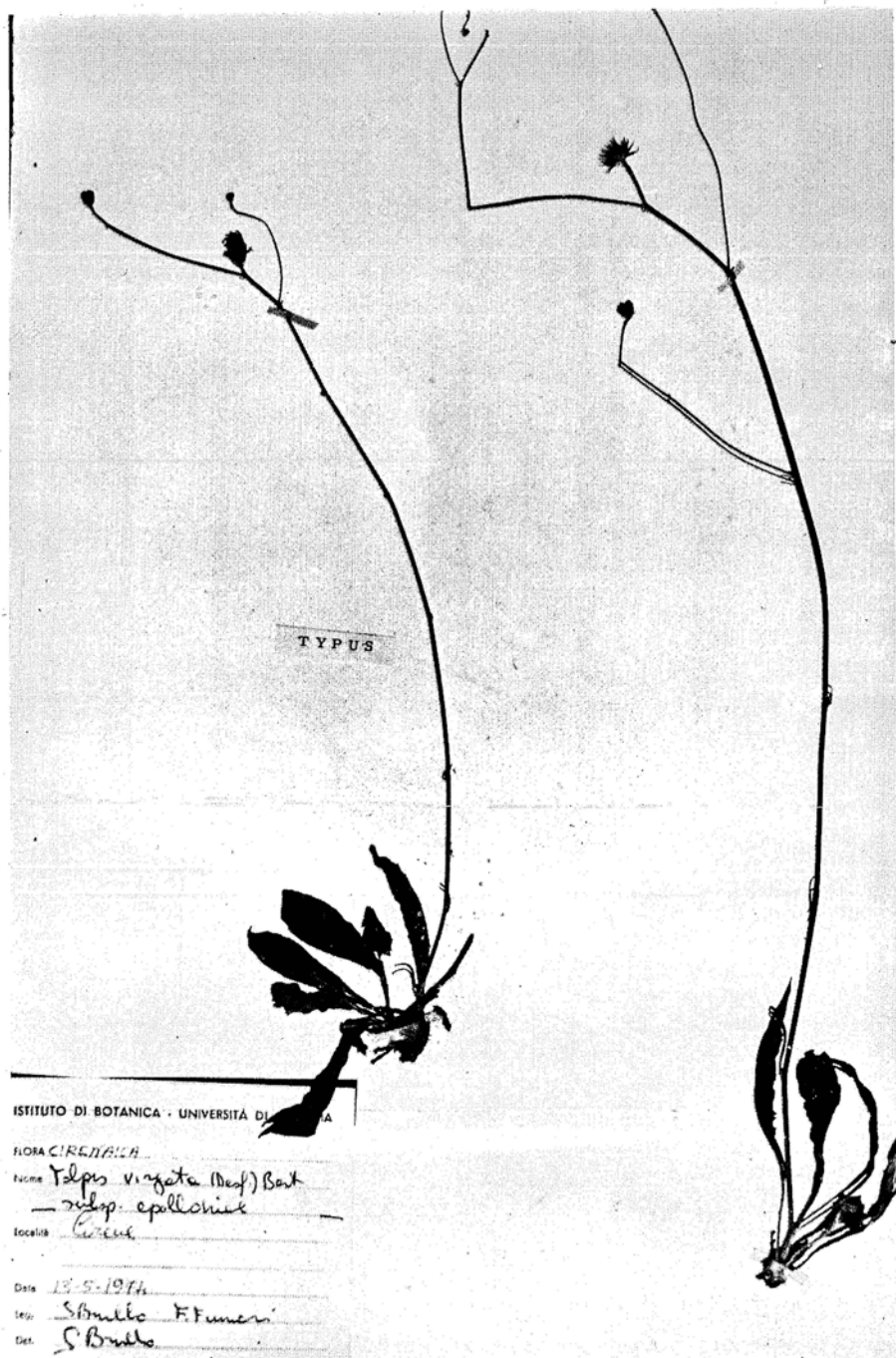


Fig. 10 — *Tolpis virgata* Bert. ssp. *apolloniae* Brullo et Furnari (holotypus).